



U.S. Department  
of Transportation

**Federal Highway  
Administration**



Google Earth  
© 2025 Google

# Project to Replace Four Bridges on Interstate 10

Mileposts 135.3 to 141.66 in Las Cruces in Doña Ana County

## Public Presentation May 2026

Control Number LC00330

# AGENDA

---

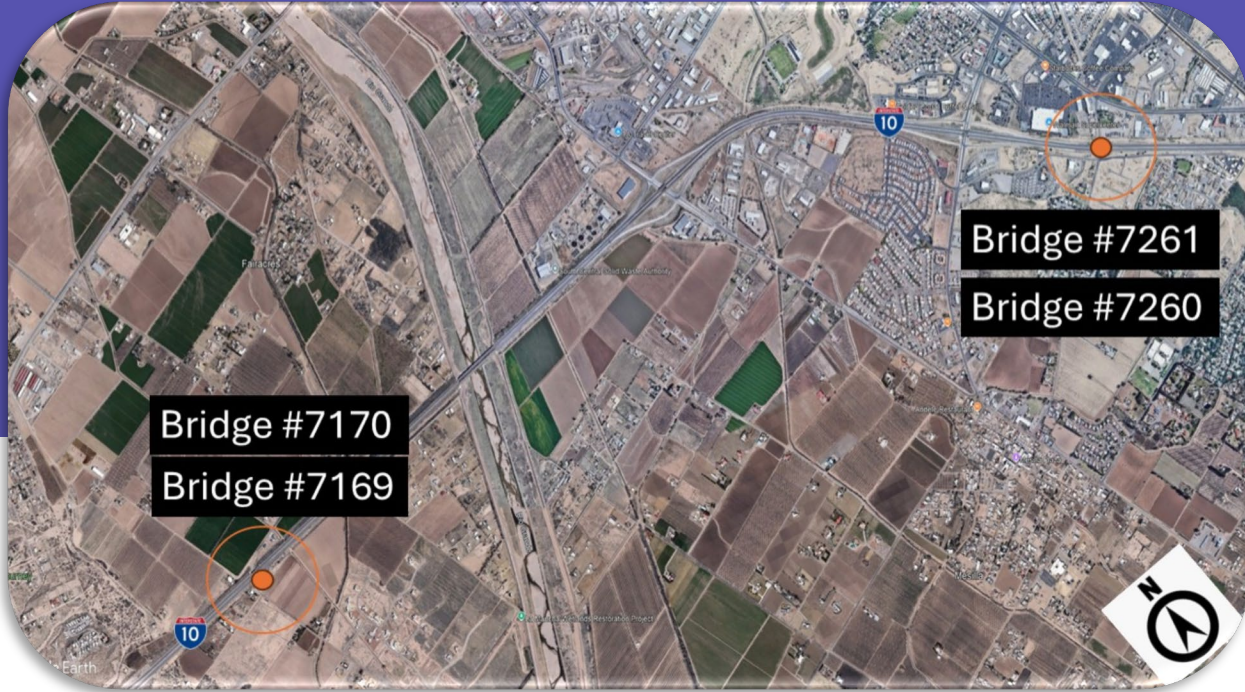
- 1 » Project Overview
- 2 » Why Is This Project Needed
- 3 » What's Changing
- 4 » Construction Approach
- 5 » We Want To Hear From You
- 6 » Questions

# PROJECT DEVELOPMENT TEAM

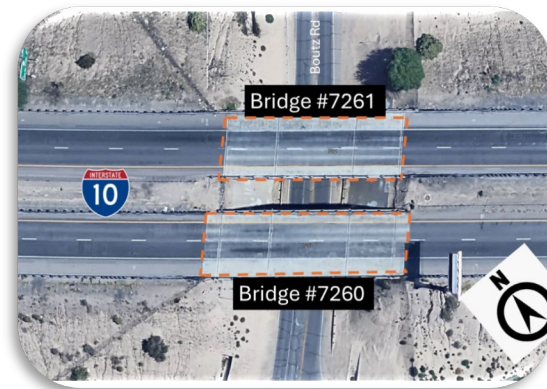
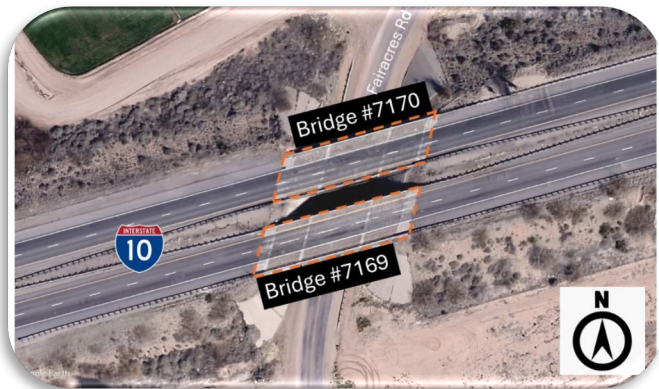
---

**Federal Highway Administration (FHWA)**

**New Mexico Department of Transportation  
(NMDOT)**



Project Bridge Location Overview



Individual Bridge Locations

# PROJECT OVERVIEW

- Located in Las Cruces in Dona Ana County, New Mexico
- Project Limits:
  - **Bridge No. 7169 & 7170**  
(near milepost 136.95)
  - **Bridge No. 7260 & 7261**  
(near milepost 140.72)

# WHAT'S THERE NOW?

## Bridges No. 7169 and No. 7170

### Existing Condition Overview

- Pre-cast concrete structures
- Built in 1971

### Geometry

- Two 12-ft travel lanes
- 4-ft inside shoulder and 10-ft outside shoulder

### Proposed Condition & Safety

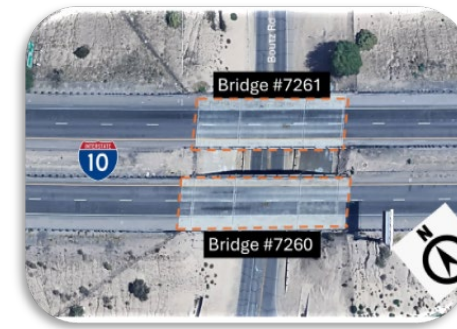
- Superstructure: Fair condition
- Delamination on girder ends with rebar strands exposed
- Low-capacity rating
- Rusting of bearing devices
- Outdated type A steel railing



**Bridges 7169 and 7170**

# WHAT'S THERE NOW?

## Bridges No. 7260 and No. 7261



### Existing Condition Overview

- Pre-cast concrete structures
- Built in 1971

### Geometry

- Two 12-ft travel lanes
- 4-ft inside shoulder and 10-ft outside shoulder

### Existing Condition & Safety

- Superstructure: Fair condition
- Delamination on girder ends and pier caps
- Advanced rusting of bearing devices
- Outdated type A steel railing



**Bridges 7260 and 7261**

# WHY IS THIS PROJECT NEEDED

---

- To enhance safety, maintain long-term access, and meet current engineering standards.
- **Why This Project is Needed:**
  - Bridges built in 1971 and are showing signs of wear due to age and use
  - Upgrading them will help improve safety, reliability, and reduce future maintenance



# WHAT'S CHANGING?

## Proposed Condition Overview

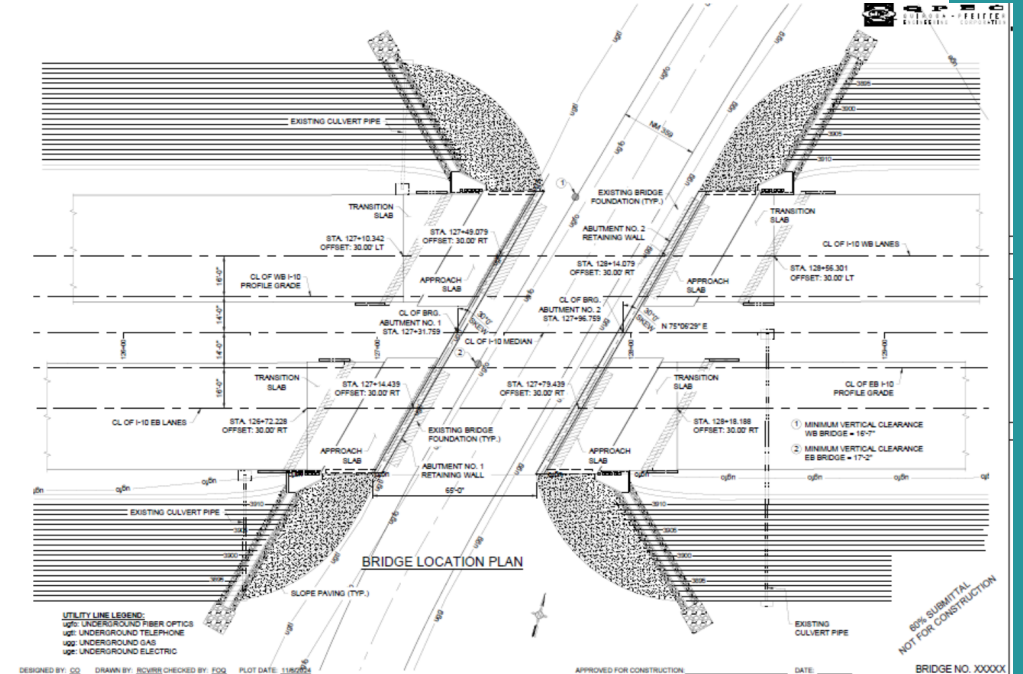
- Replace with a 65' single span with (5) steel girders and 10-inch concrete deck
- Replace ITS fiber optic cable and manholes impacted by bridge reconstruction.

## Geometry

- Two 12-ft travel lanes
- 4-ft inside shoulder and 10-ft outside shoulder

## Proposed Condition & Safety

- Add concrete barrier railing
- Upgrade guardrail
- Reconstruct roadway approach and departure to correct roadway vertical curvature



**Bridges 7169 and 7170**

# WHAT'S CHANGING?

## Proposed Condition Overview

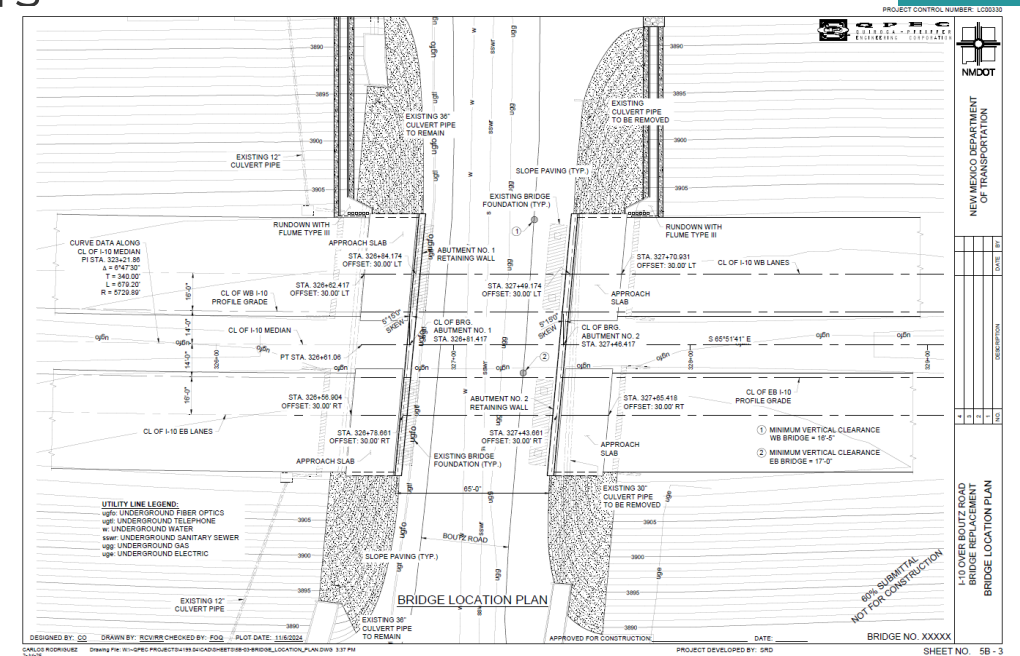
- Replace with a 65' single span with (5) steel girders and 10-inch concrete deck
- Replace irrigation culvert underneath bridges

## Geometry

- Two 12-ft travel lanes
- 4-ft inside shoulder and 10-ft outside shoulder

## Proposed Condition & Safety

- Add concrete barrier railing
- Upgrade guardrail
- Reconstruct roadway approach and departure to correct roadway vertical curvature
- Improve drainage and slope protection at bridges 7260 and 7261.



## Bridges 7260 and 7261

# ENVIRONMENTAL CONSIDERATIONS

---

- Surveys of cultural resources have been completed.
- No impacts to waters of the U.S., protected species, or critical habitat.
- Coordination will occur to avoid impacts to historic and cultural resources in the area.
- Consultation with the State Historic Preservation Officer (SHPO) has been completed.

**Protecting both the environment and the cultural heritage of the area is a key part of this project.**

# SECTION 4(F) ANALYSIS

---

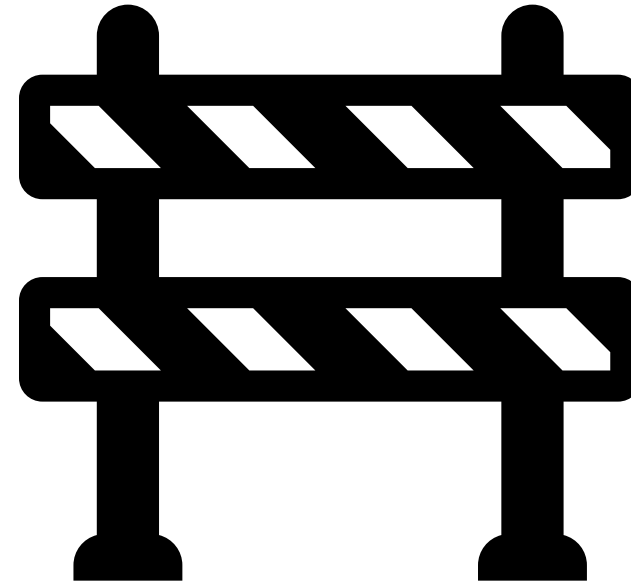
- The 1966 USDOT Act Section 4(f) protects historic resources unless there is no other prudent and feasible option and measures have been taken to minimize harm.
- The project team will further coordinate with New Mexico State Historic Preservation Office (SHPO) to determine methods to mitigate adverse effects.



# CONSTRUCTION APPROACH

---

- Construction is anticipated to begin in Winter 2026
- One lane of traffic will remain open, helping to avoid storm-related detours and enhance safety for both drivers and construction crews



# SCHEDULE AND NEXT STEPS

## Project Scoping

- Complete

## Preliminary Design Development

- Ongoing

## Final Design

- Early Summer 2026

## Project Advertised and Awarded to a Contractor

- Late Summer 2026

## Anticipated Start of Construction

- Winter 2026

# We Want to Hear From You

---

For any comments, questions, or concerns:



<https://www.dot.nm.gov/event/i10-bridges/>



1120 Cerrillos Rd, Room 205  
Santa Fe, NM 87505



[Joshua.holguin@dot.nm.gov](mailto:Joshua.holguin@dot.nm.gov)



505.470.3637



**Comment deadline:**  
**Thursday, June 25, 2026**



NMDOT Event Page



U.S. Department  
of Transportation

**Federal Highway  
Administration**



# Thank You!



**NMDOT Event Page**