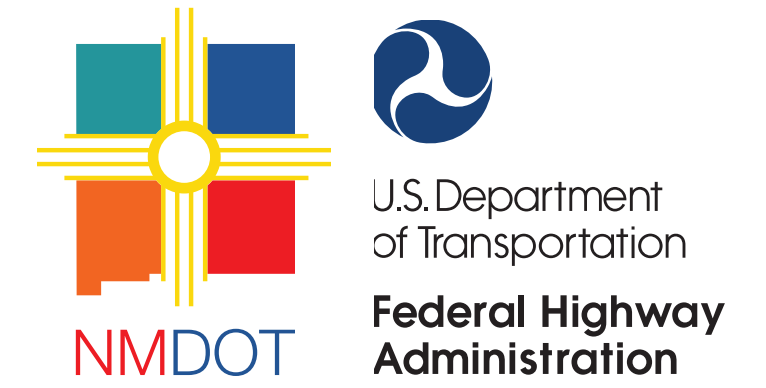


# US 180 SILVER CITY SAFETY SCOPING PROJECT OPEN HOUSE

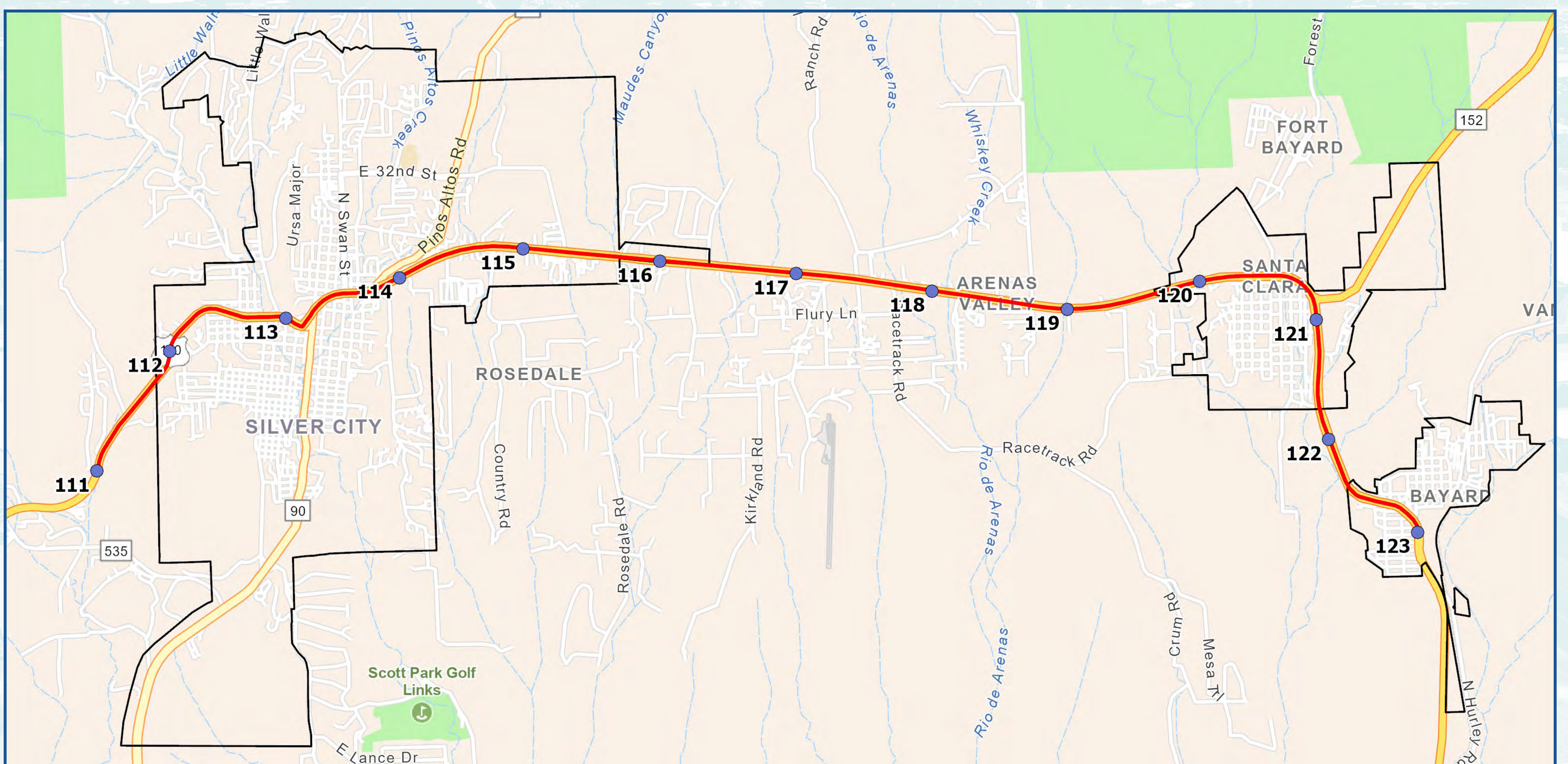


US 180 has been identified as a hotspot of safety concerns. This includes:

- Being ranked second in the state in wildlife vehicle collisions per mile.
- Sections of the corridor completely lacking bicycle and pedestrian accommodations.
- General safety concerns such as access, lighting, and other issues.

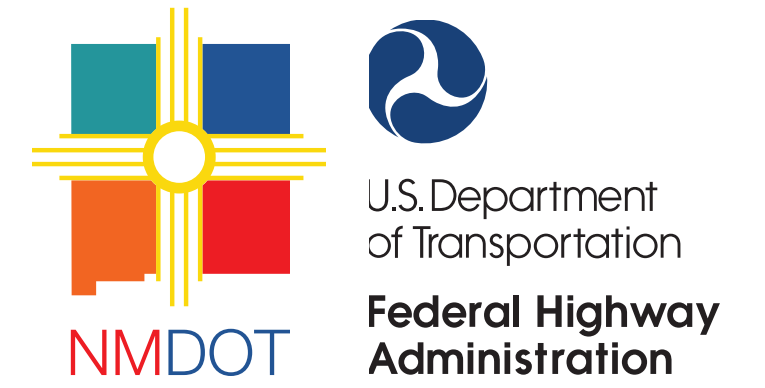
Tonight's open house provides an overview of existing conditions along this corridor relating to these safety concerns.

Please visit our information stations and chat with our team about the project, thank you!





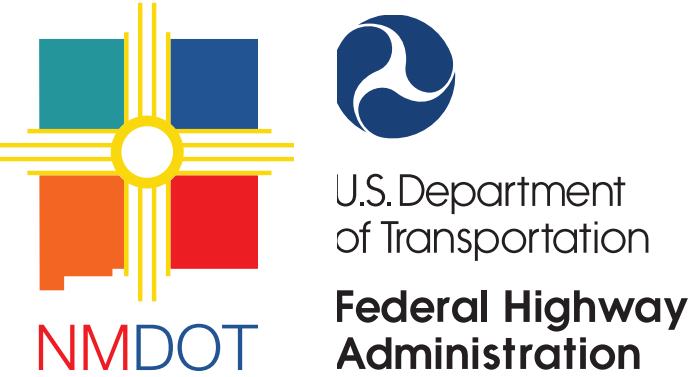
# US 180 SILVER CITY SAFETY SCOPING PROJECT OPEN HOUSE



# Welcome to the US 180 Silver City Safety Scoping Project!



# Segment 1





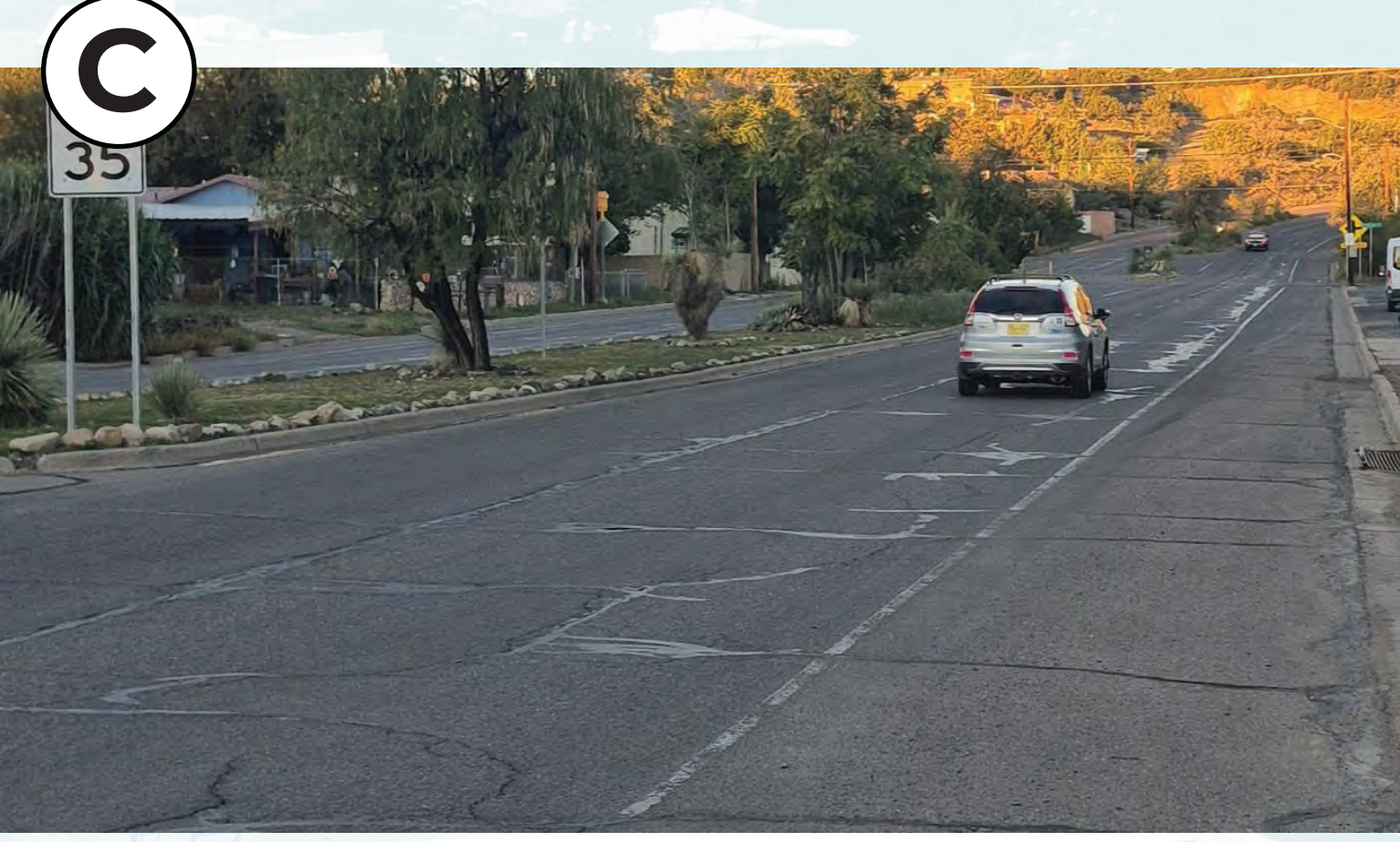
# Segment 1



How comfortable would you feel walking along this street?



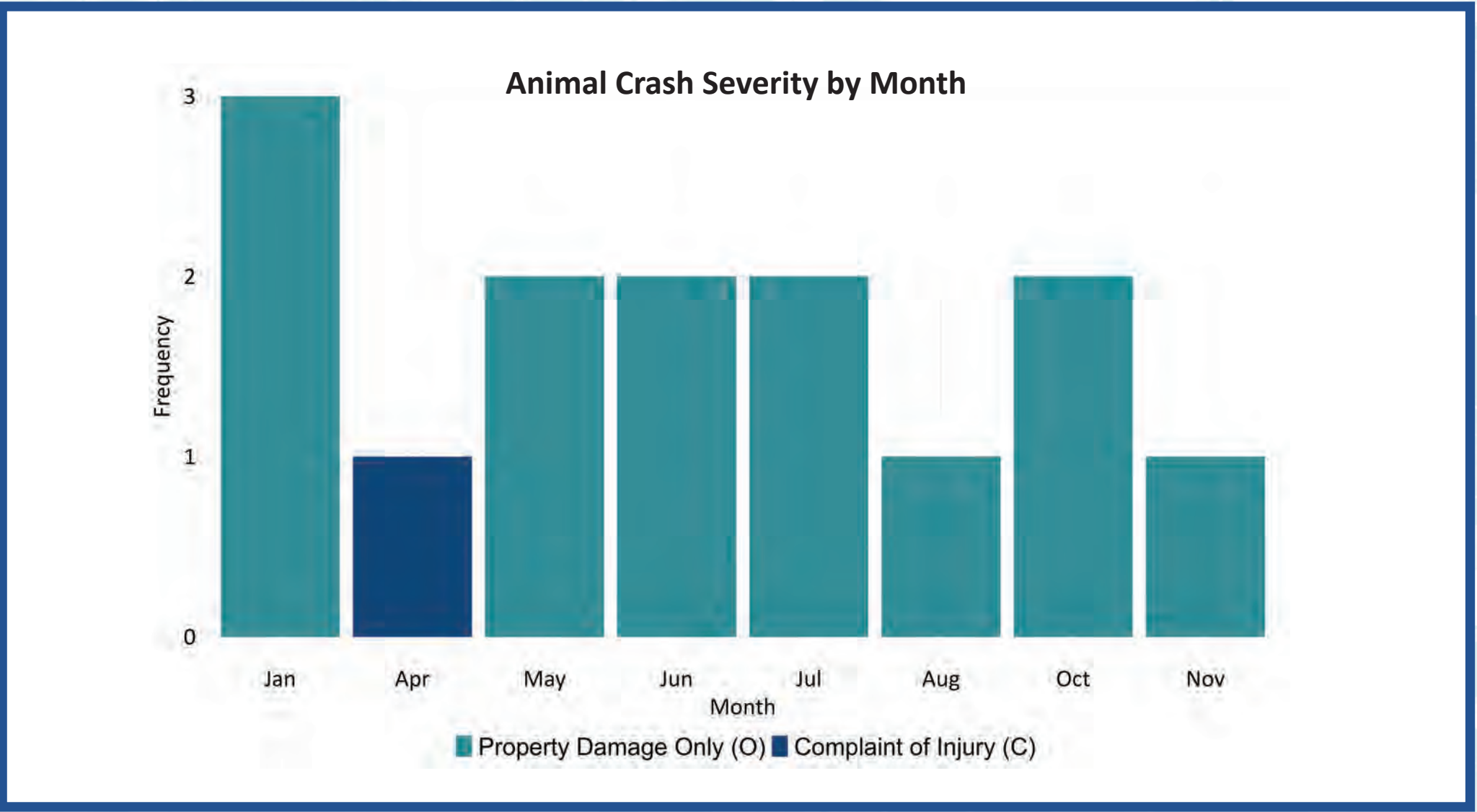
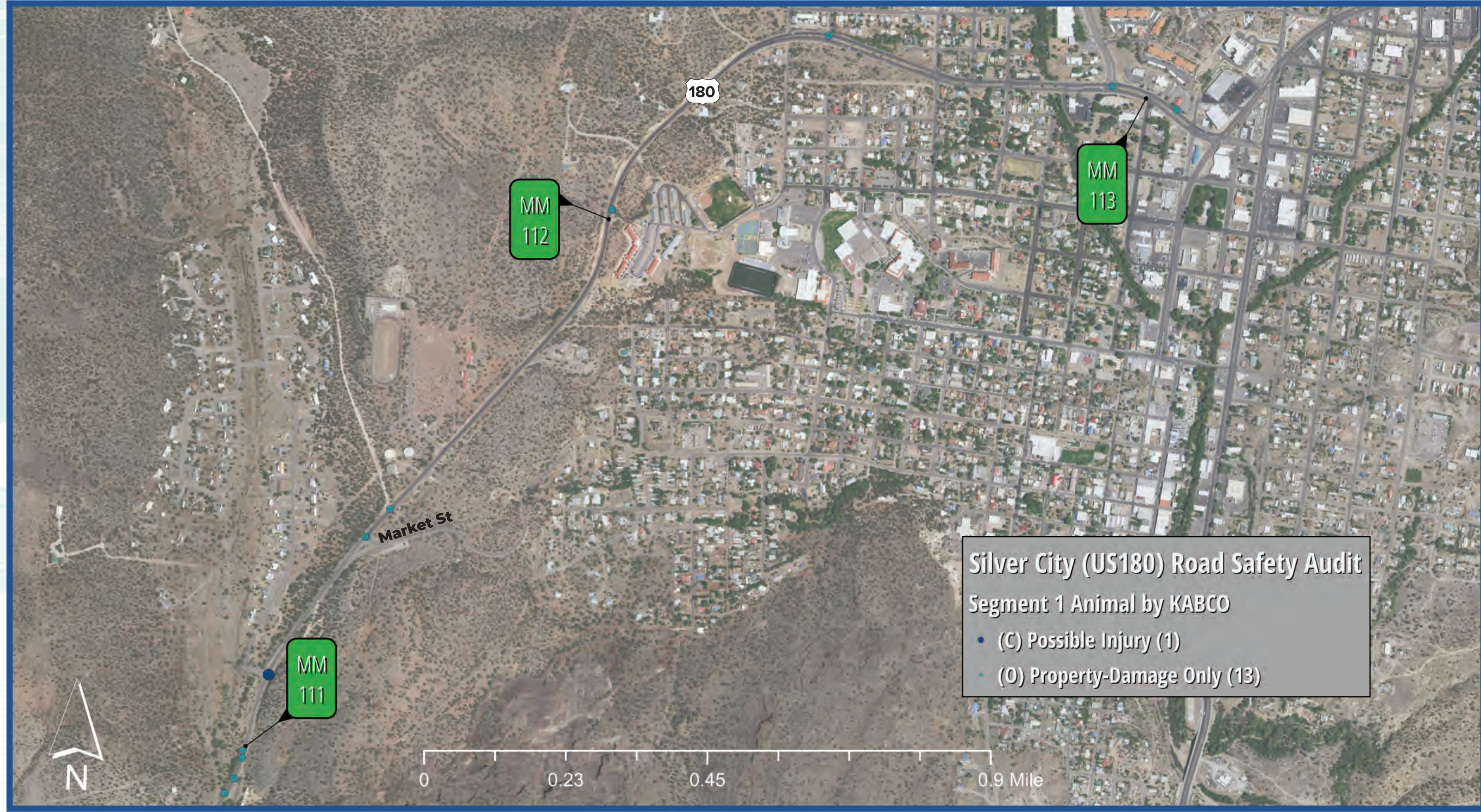
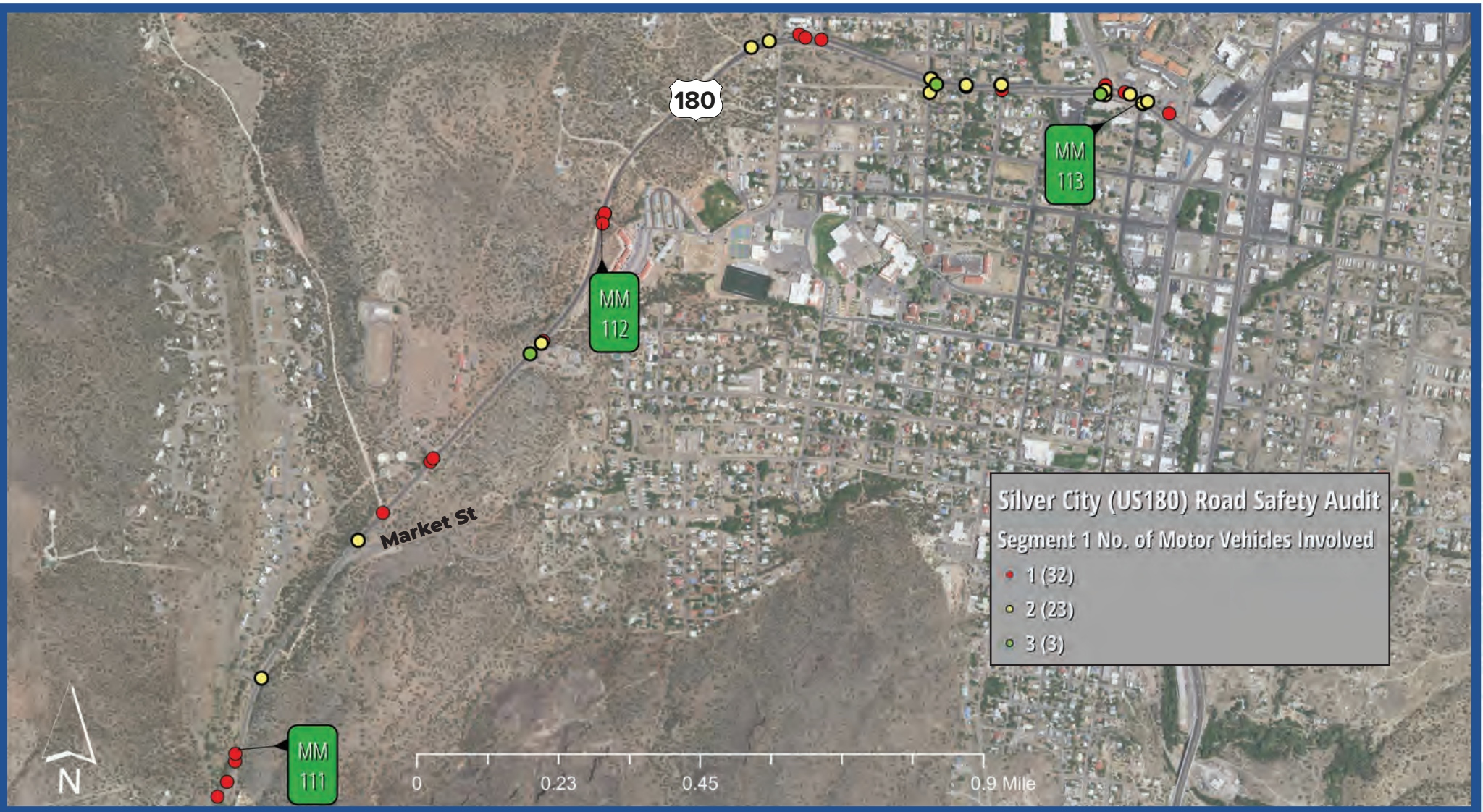
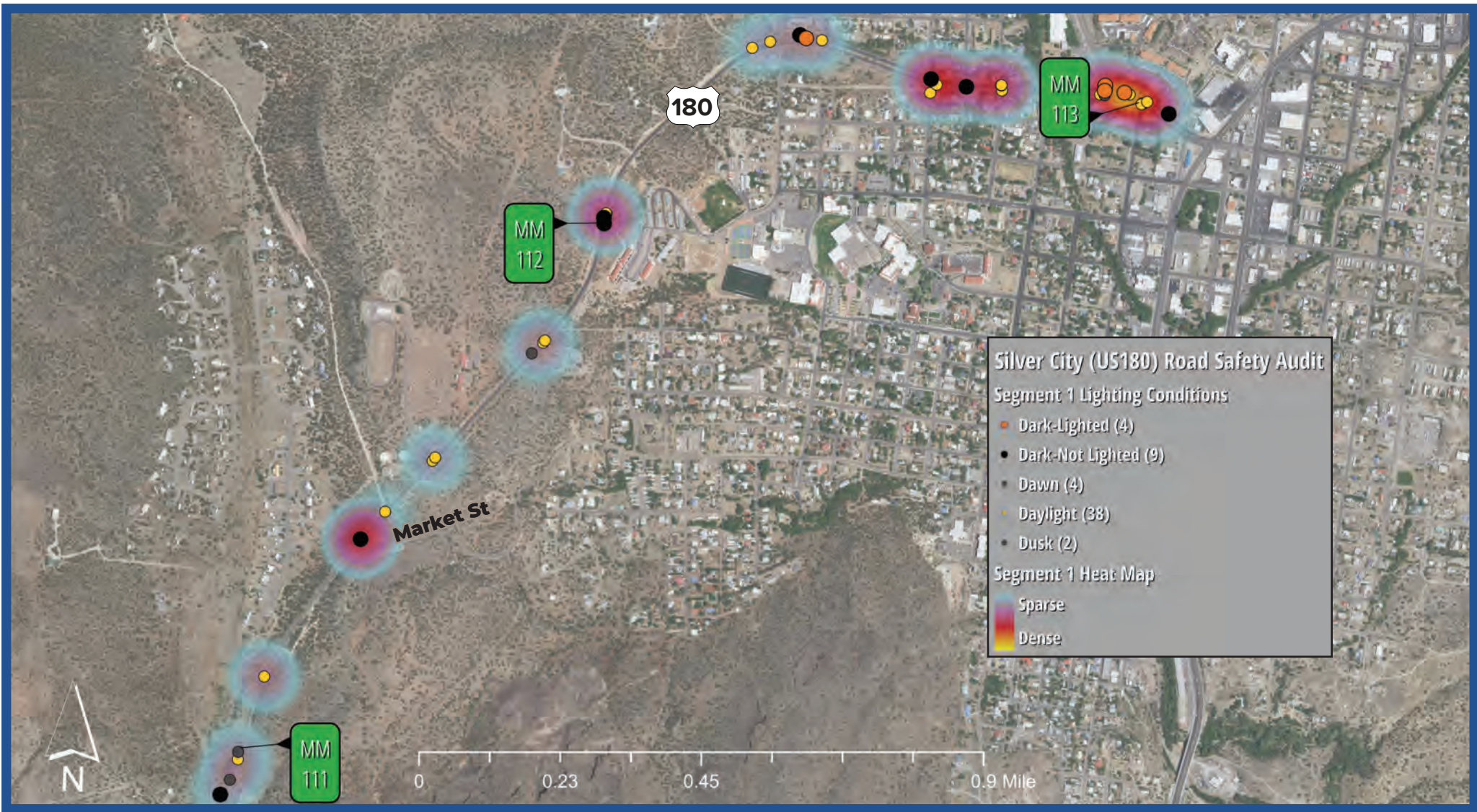
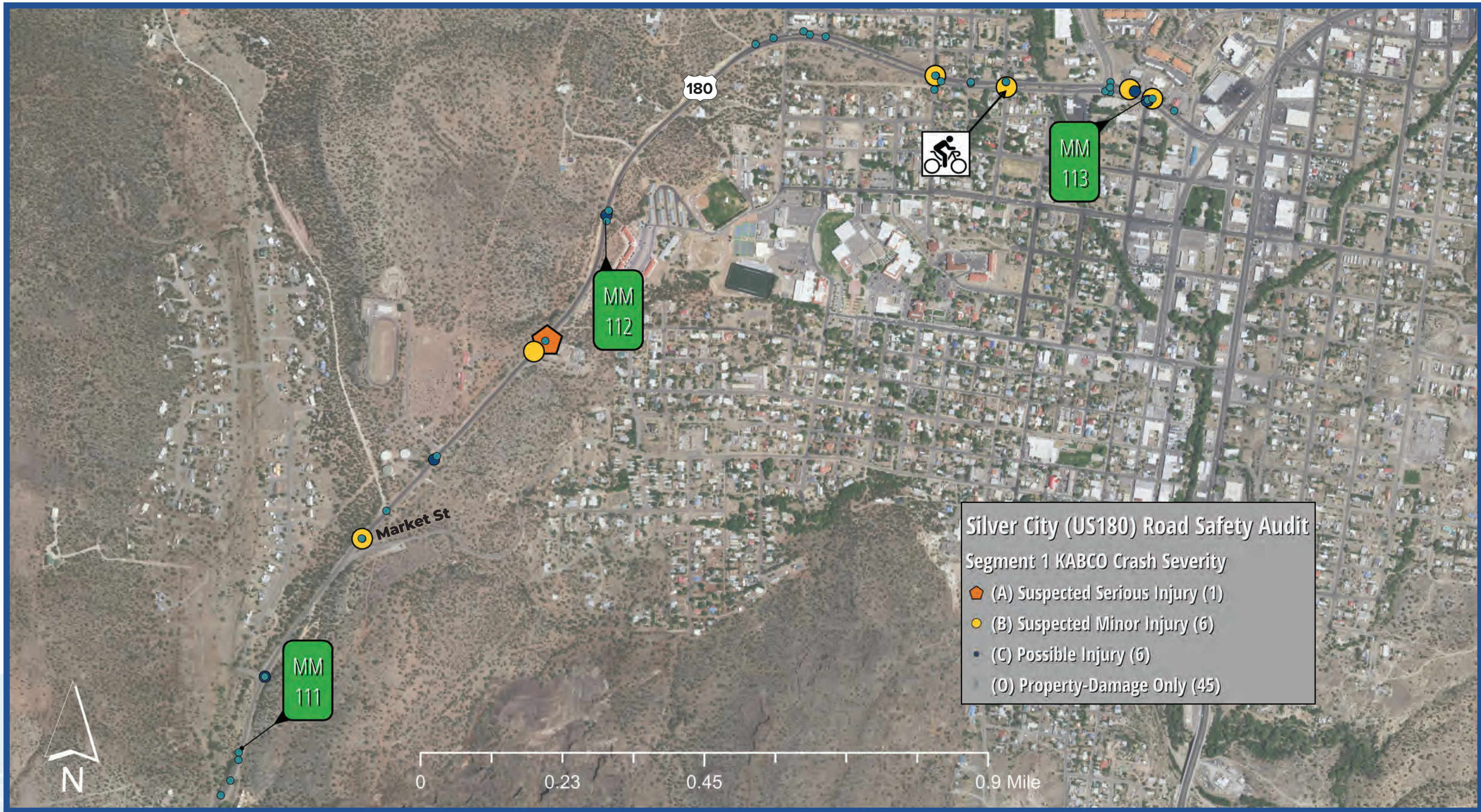
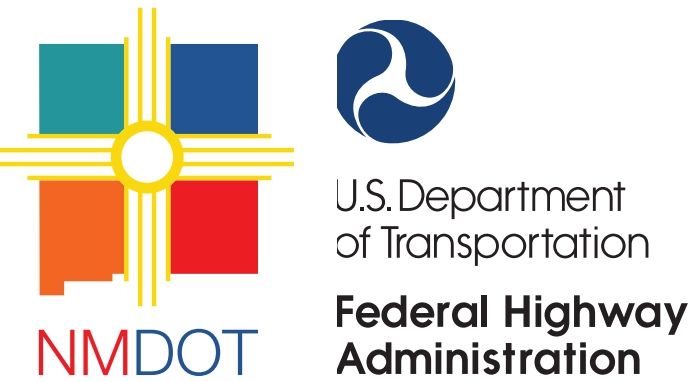
How comfortable would you feel crossing this street on foot?



How comfortable would you feel bicycling along this street?



# Segment 1





# Segment 1



Figure 1: US 180 West of San Vicente Trail



Figure 2: East of US 180 and Virginia Street Intersection



Figure 3: Intersection of US 180 and Little Walnut Road



Figure 4: US 180 West of San Vicente Trail



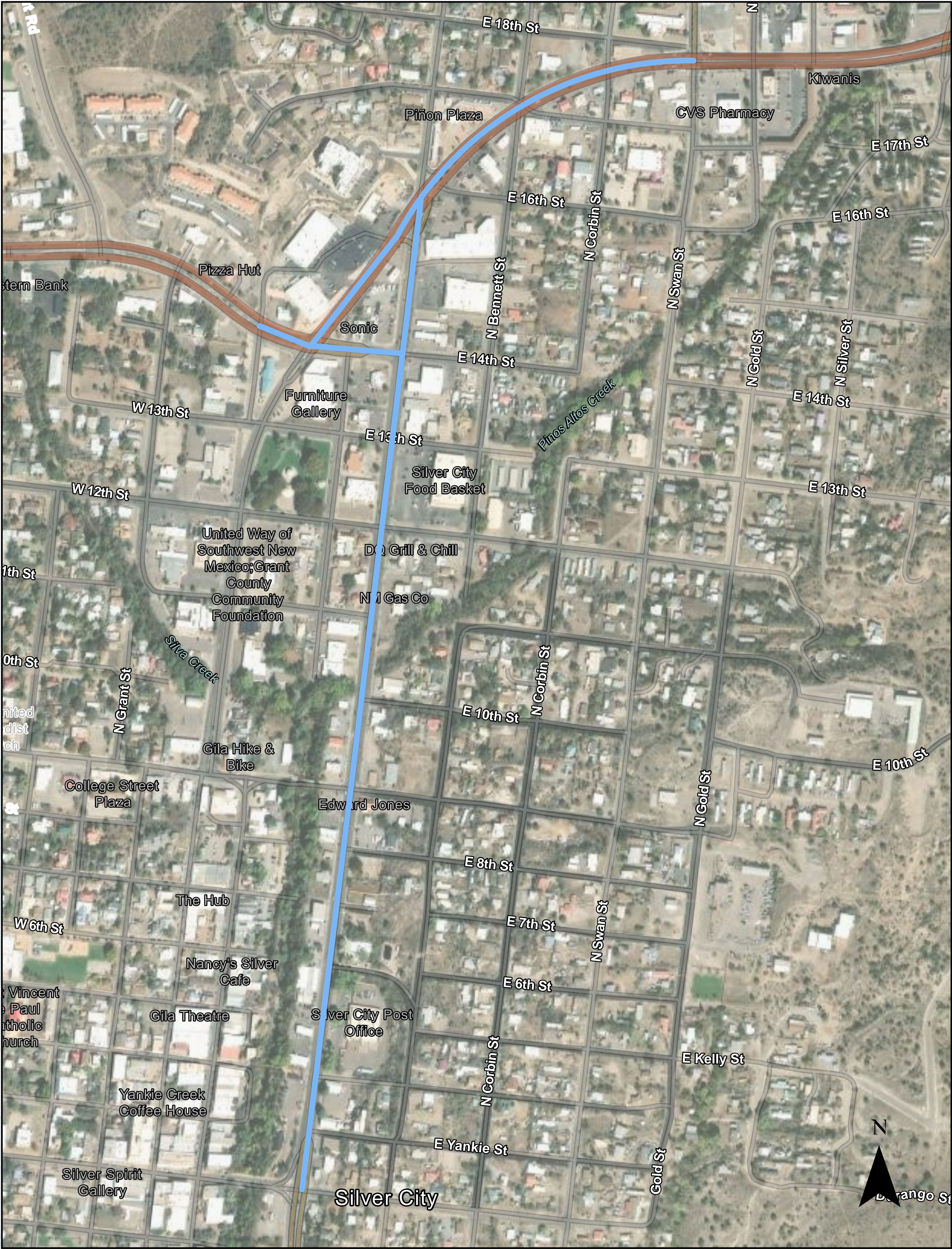
Figure 5: West of US 180 and Little Walnut Road Intersection



Figure 6: Intersection of US 180 and Alabama Street



# Segment 2





# Segment 2



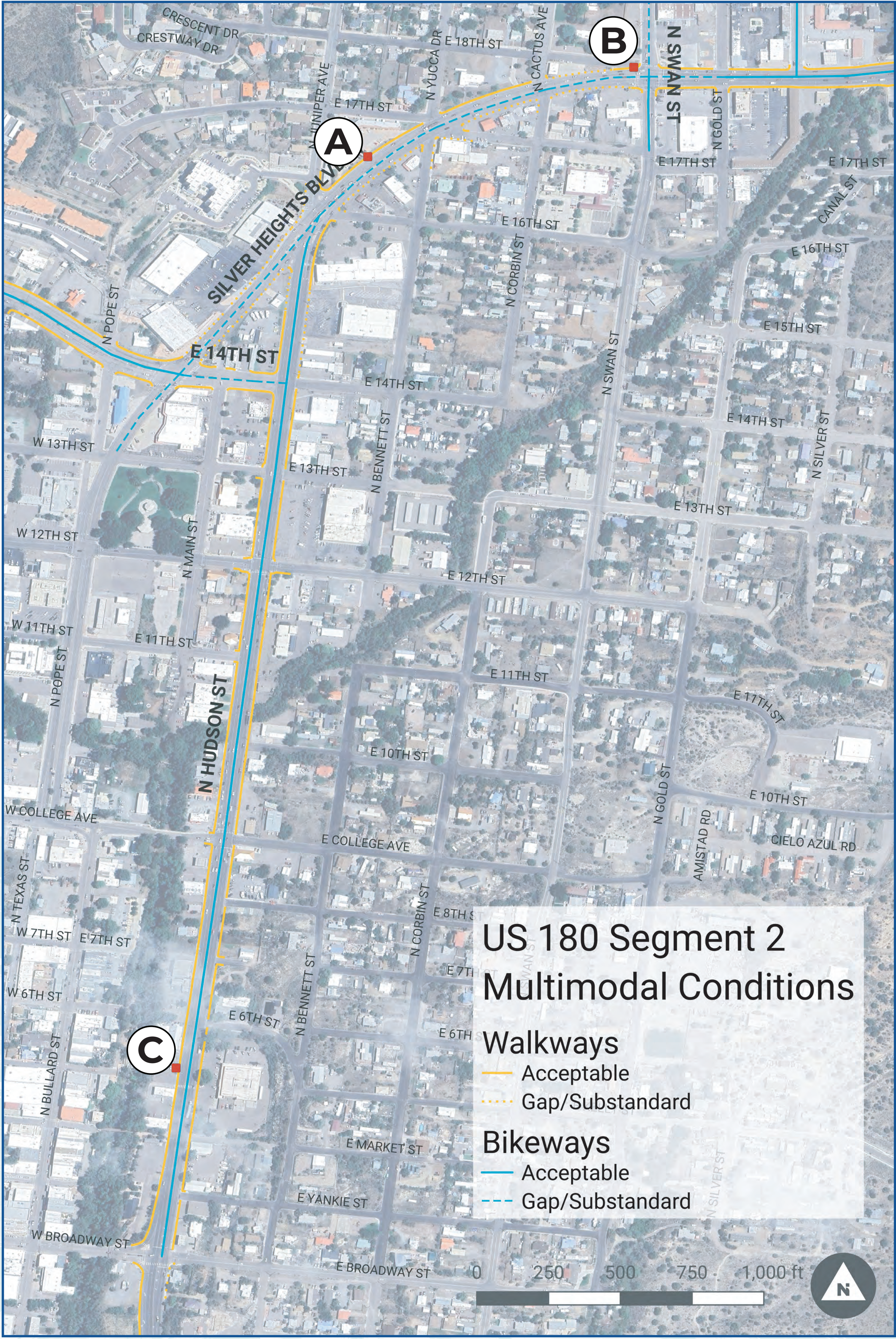
How comfortable would you feel crossing this street on foot?



How comfortable would you feel bicycling along this street?



How comfortable would you feel crossing this street on foot?





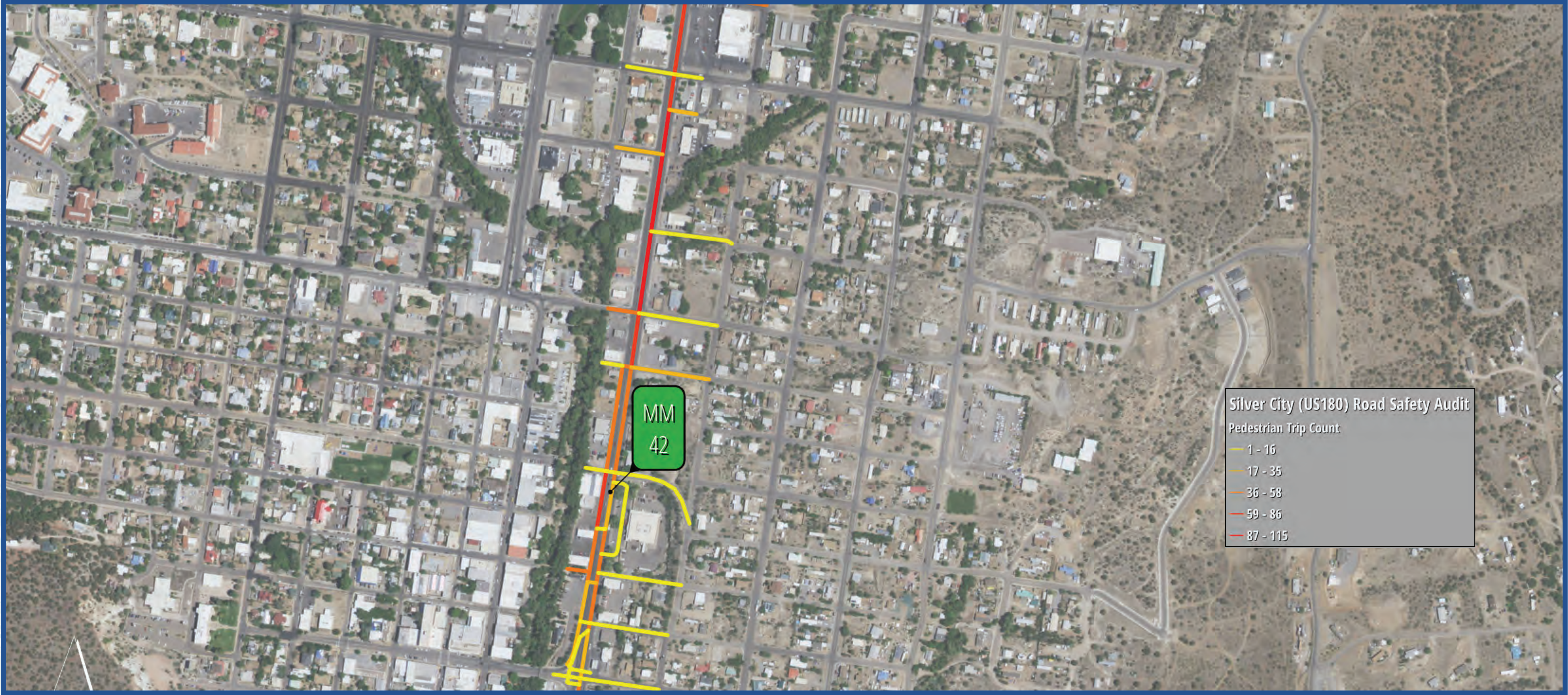
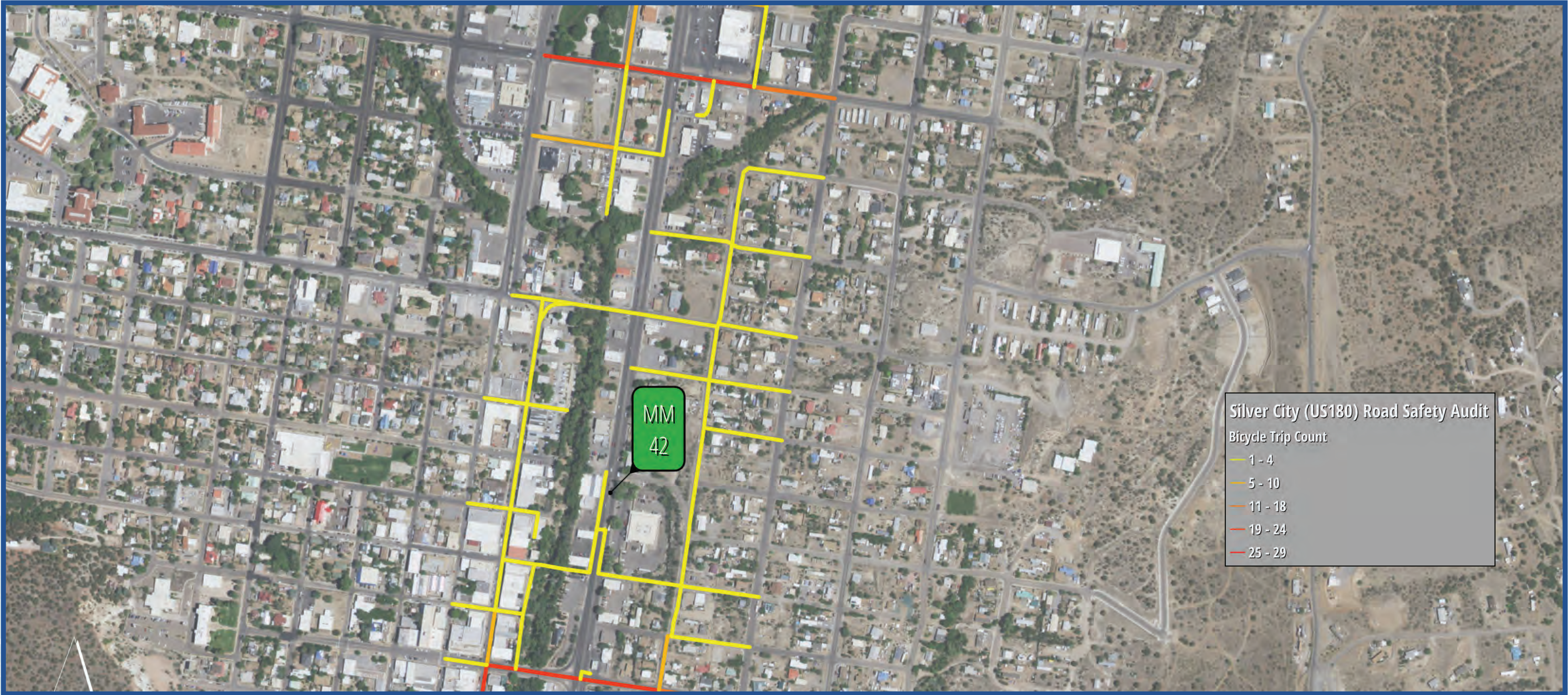
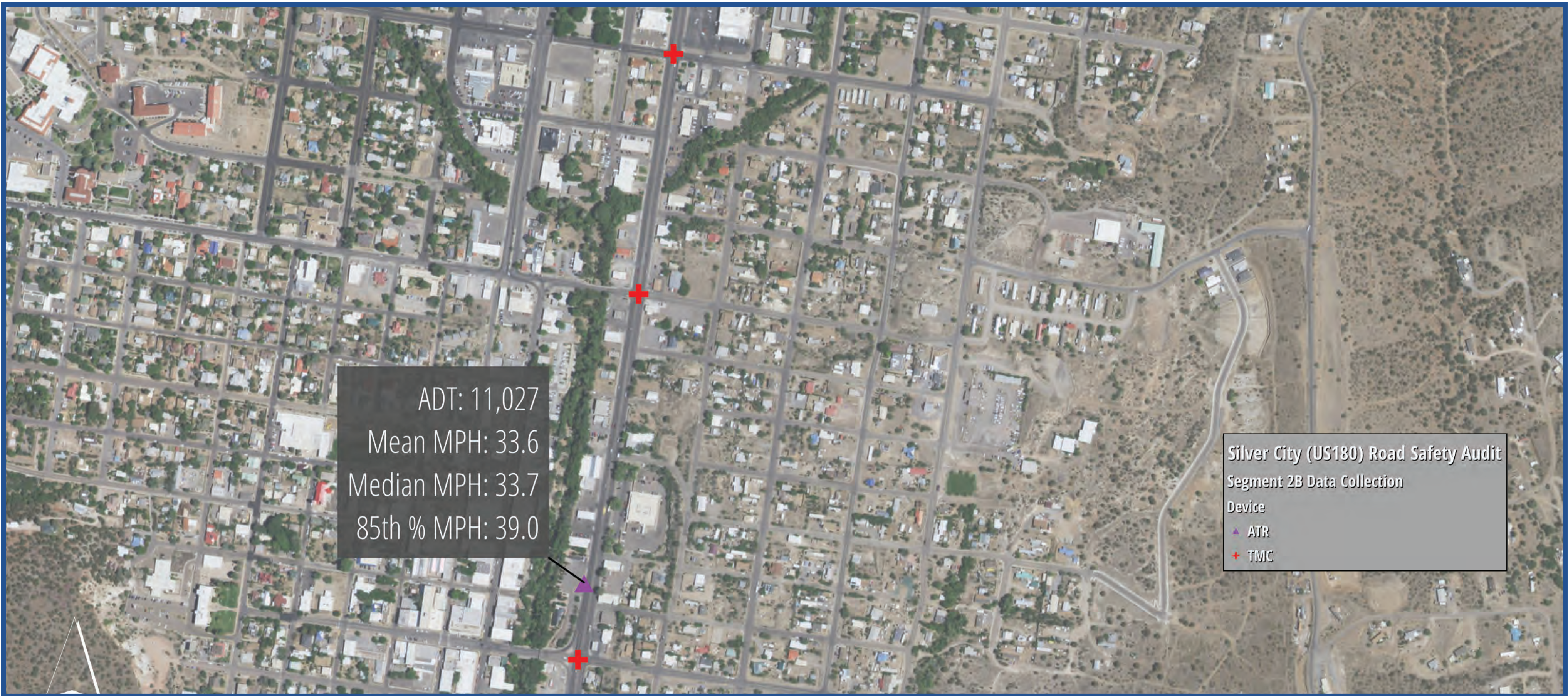
# Segment 2



ADT= Average Daily Traffic  
TMC = Turn Movement Count  
ATR = Automated Traffic Recordings  
MM = Mile Marker



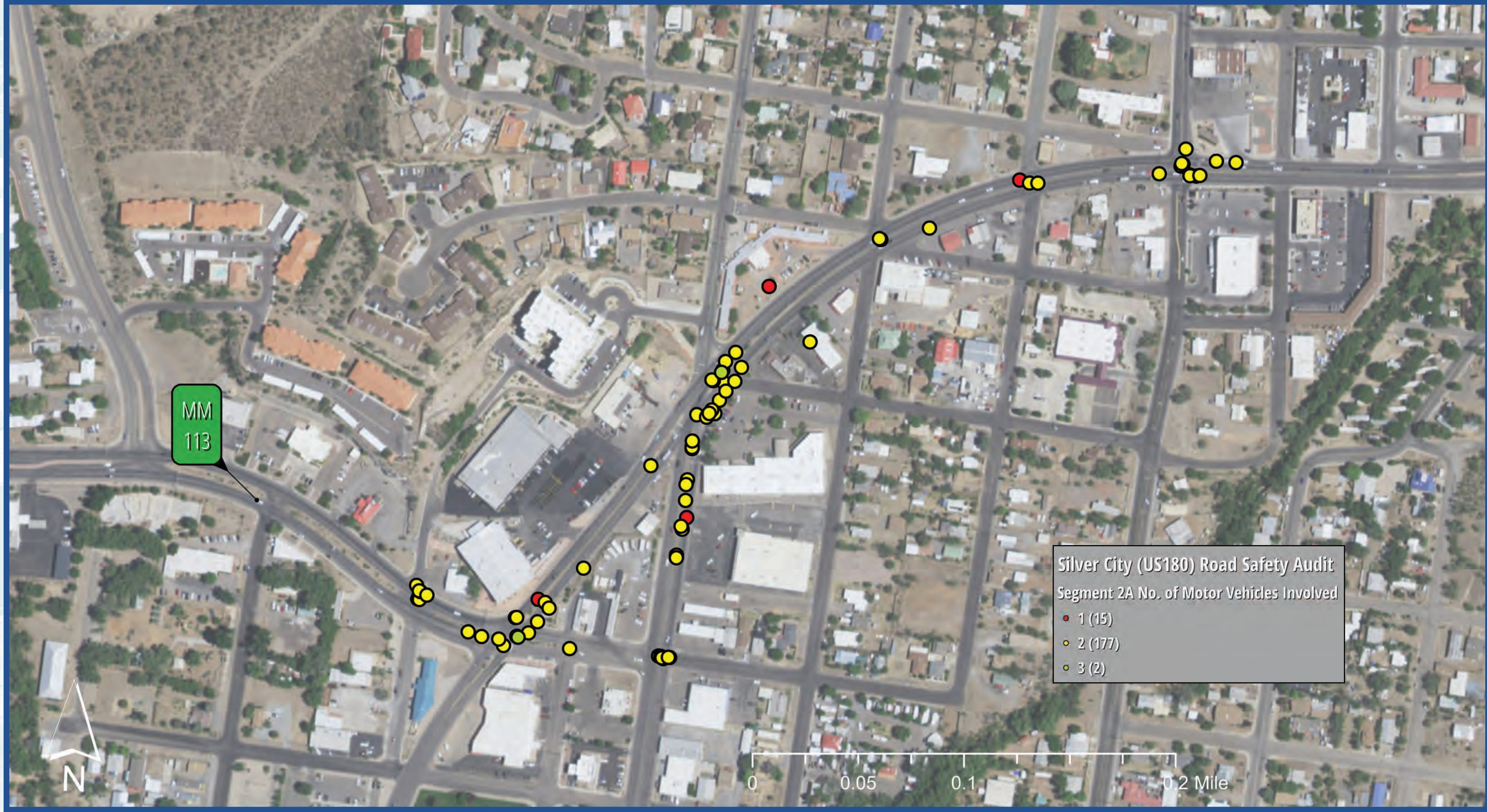
# Segment 2



ADT= Average Daily Traffic  
TMC = Turn Movement Count  
ATR = Automated Traffic Recordings  
MM = Mile Marker

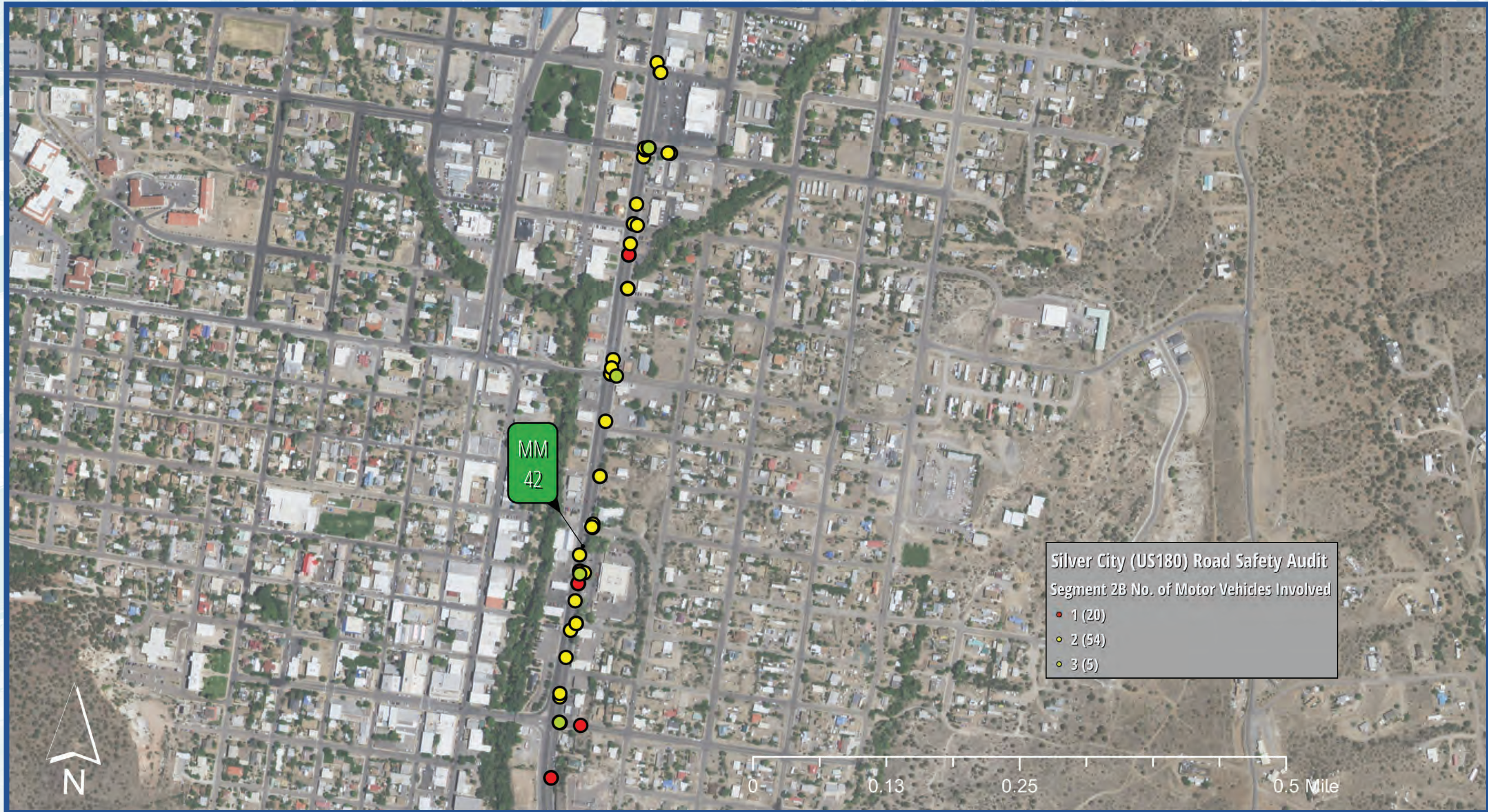
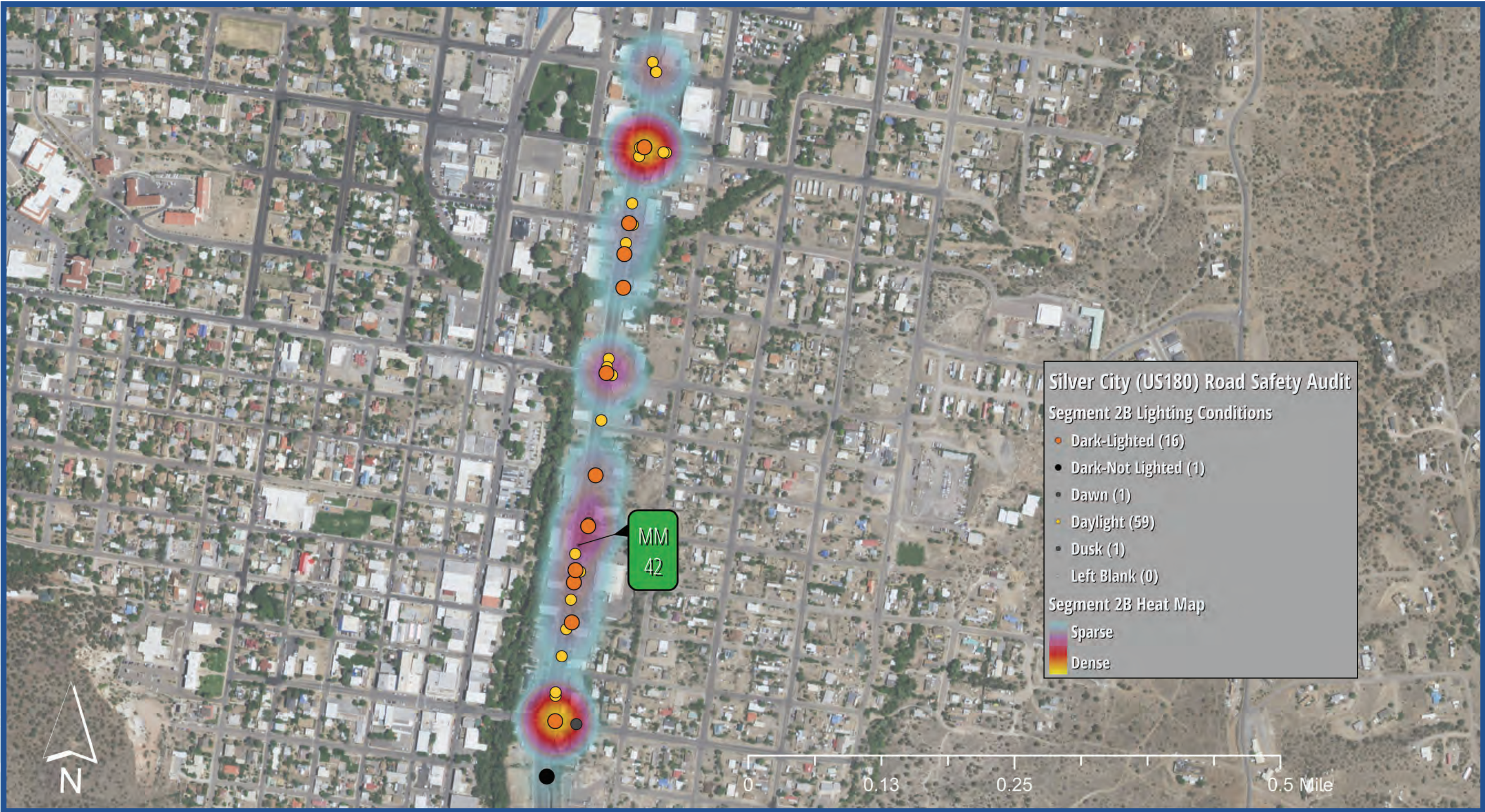
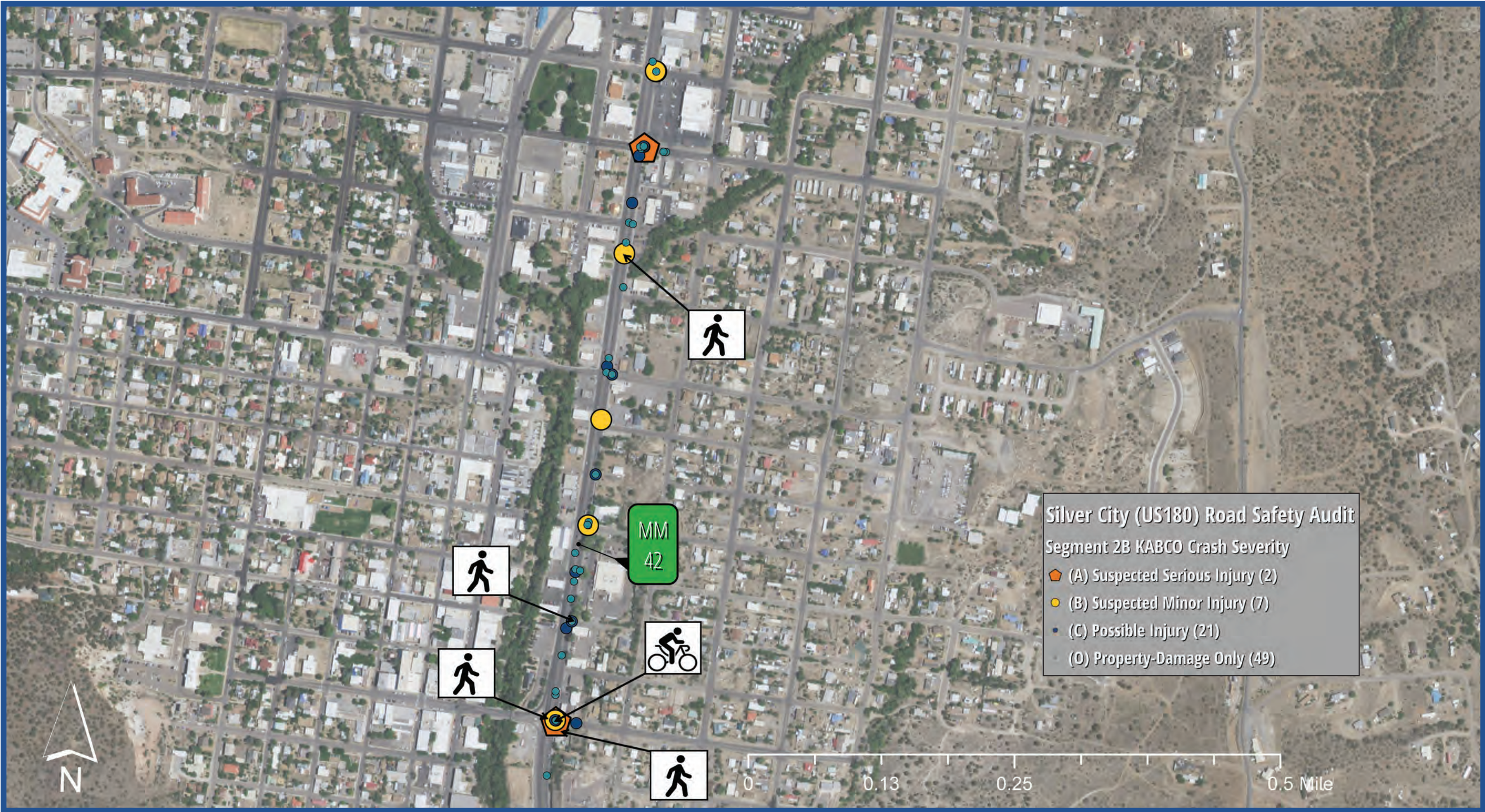


# Segment 2





# Segment 2





# Segment 2



Figure 3: Intersection of NM 90 and Broadway Street



Figure 2: West of US 180 and NM 90 Intersection



Figure 3: Intersection US 180 and Yucca Street



Figure 5: Intersection of NM 90 and 13th Street



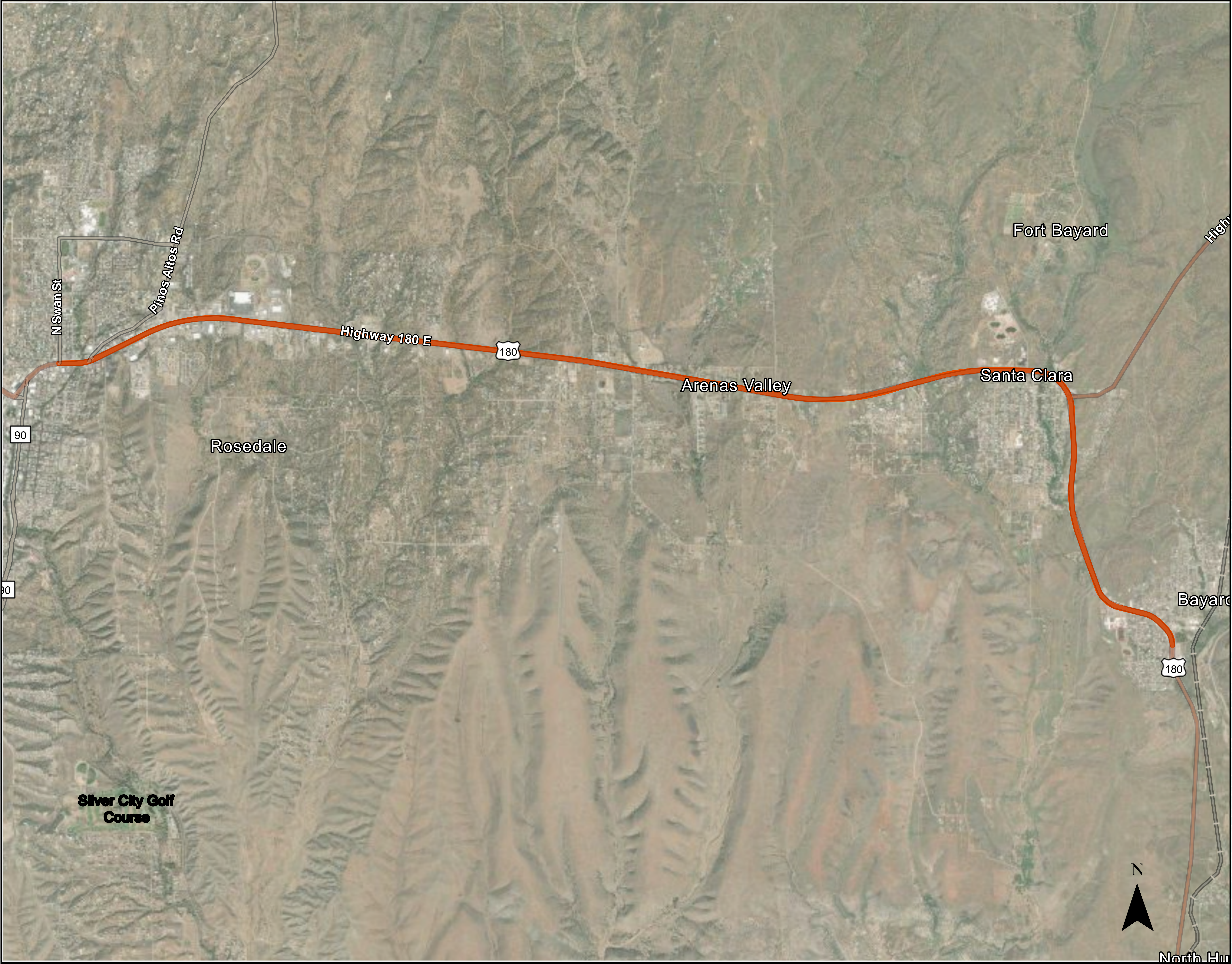
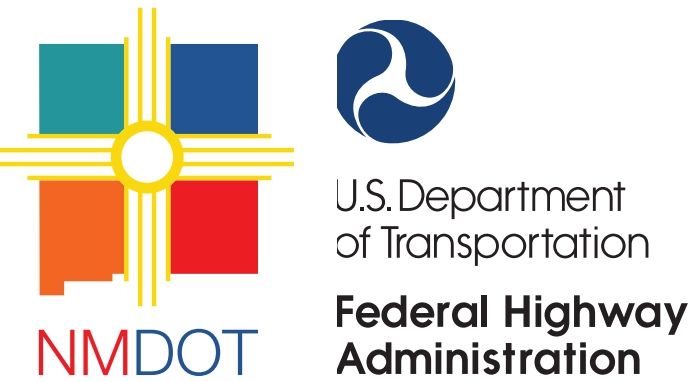
Figure 5: East of US 180 and NM 90 Intersection



Figure 6: Intersection of US 180 and Juniper Street

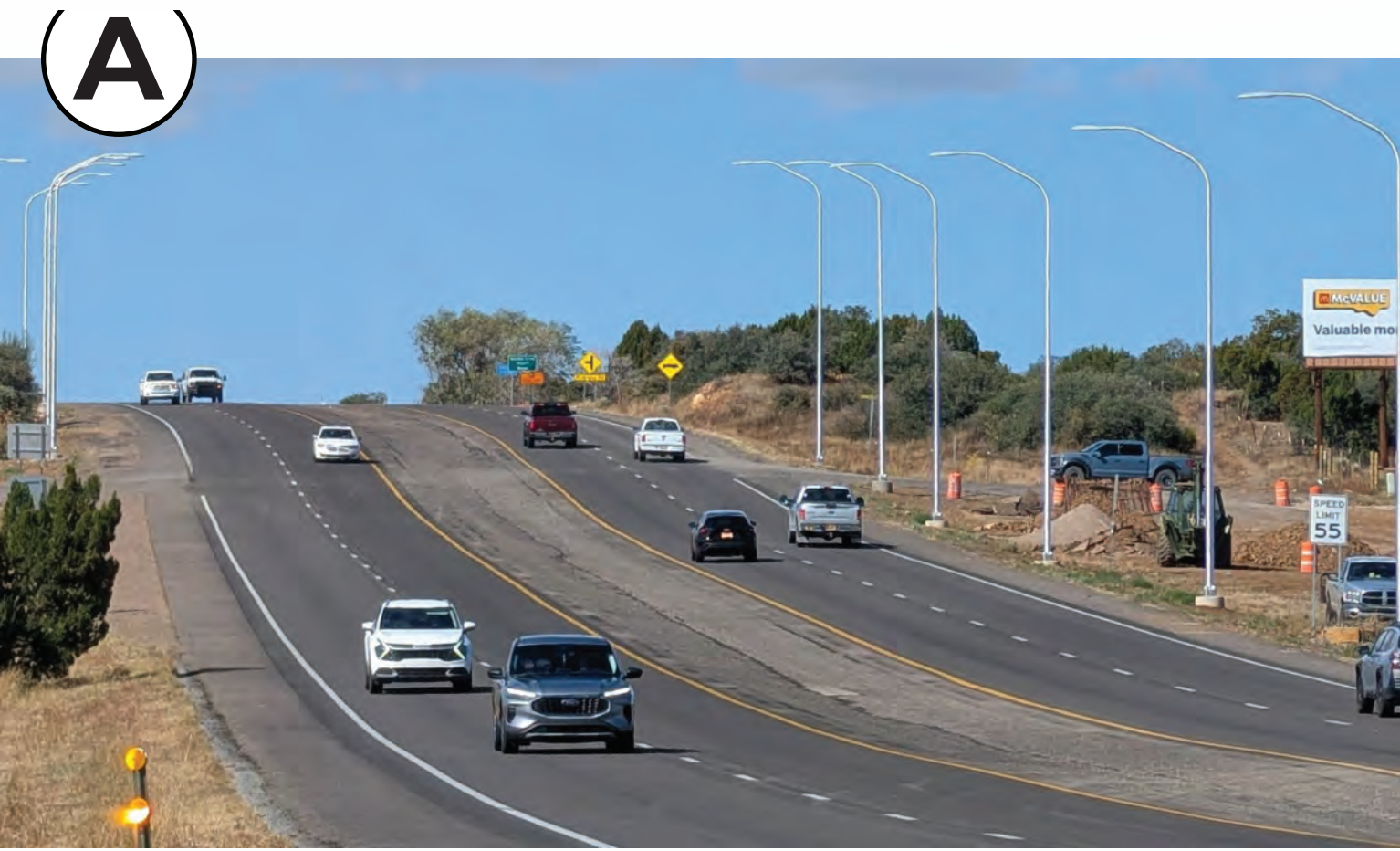
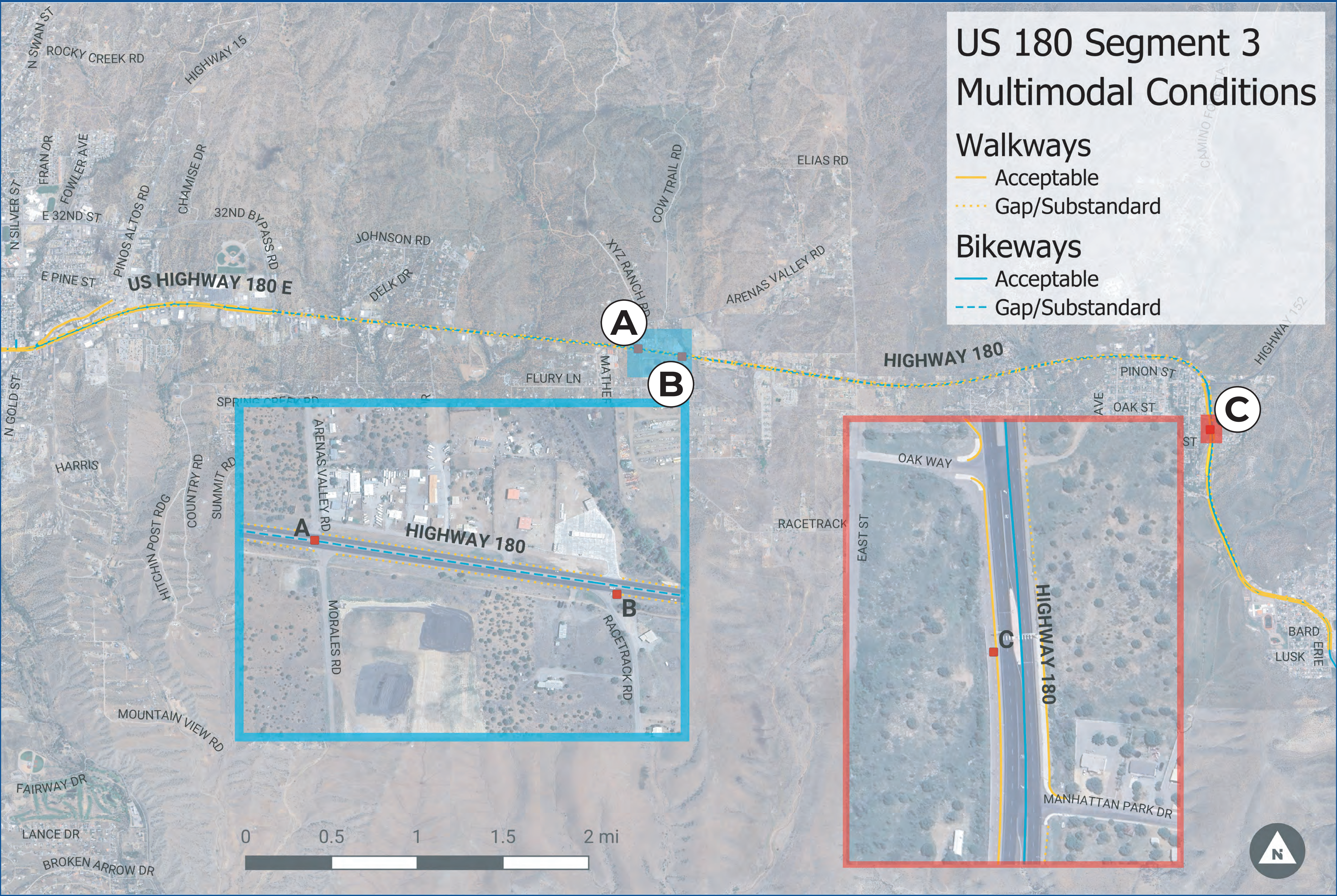


Segment 3





# Segment 3



**(A)** How comfortable would you feel bicycling along this street?



**(B)** How comfortable would you feel walking along this street?



**(C)** How comfortable would you feel crossing this street on foot?



# Segment 3



Figure 1: Pedestrian Crossing Adjacent to Cobre Consolidated High School



Figure 2: East of US 180 and Swan Street Intersection



Figure 3: Intersection of US 180 and Pinos Altos Road



Figure 4: West of US 180 and Walnut Street Intersection



Figure 5: West of US 180 and Delk Drive



Figure 6: East of US 180 and Walmart Driveway Intersection



# Segment 3

