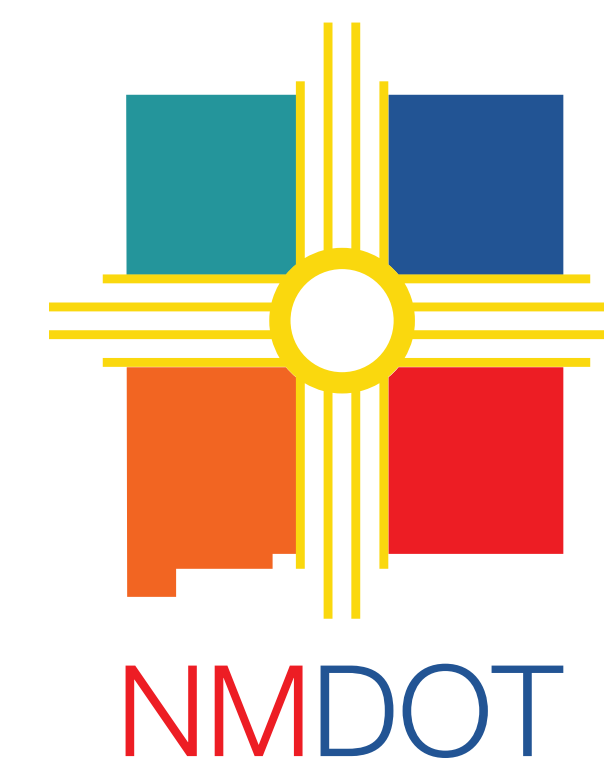


Welcome



U.S. Department
of Transportation
**Federal Highway
Administration**

Welcome to the Public Meeting for the Paseo del Volcan (PDV) Road Extension Study. This study is an initiative of the New Mexico Department of Transportation (NMDOT) in cooperation with the Federal Highway Administration (FHWA).

The PDV Extension is part of a larger regional corridor with an established corridor. The purpose of this event is to share the recommended roadway concepts developed, and obtain public feedback before finalizing the study document this summer and move forward with design development.

Your input is needed to help make decisions on the roadway alignment within the established corridor and to develop features such as intersections, lighting, access, bicycle and pedestrian facilities, and other related items to best serve your community. Questions answered at this meeting includes:

- Why is NMDOT extending Paseo del Volcan?
- What is the purpose of this study?
- Previous public input
- What is the recommended alternative?
- How public input can be provided on the recommended alternative?
- What is the timeline for the PDV roadway extension?

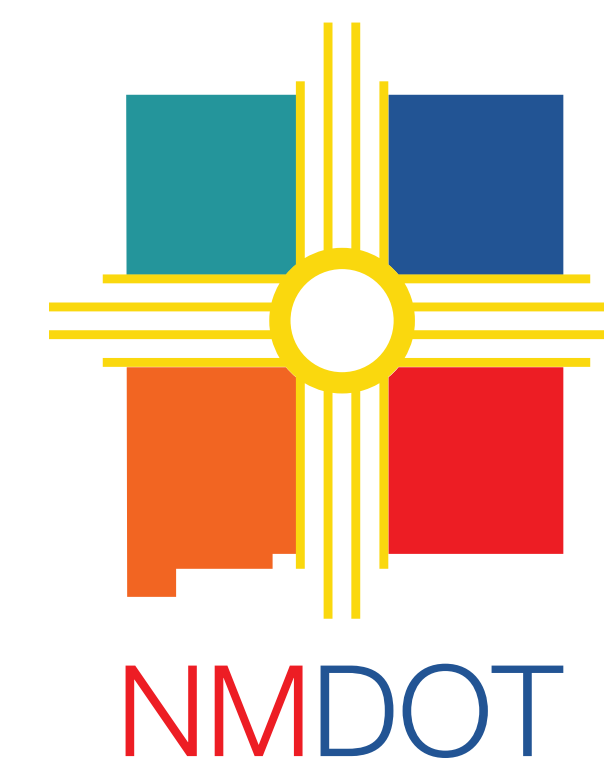
Displays and project team members are located at various stations in the room.

 **Please feel free to view the information and ask questions.**

 **You can provide comments at any of the stations, but if you prefer there is also a table for you to comments**

Thank you for participating!

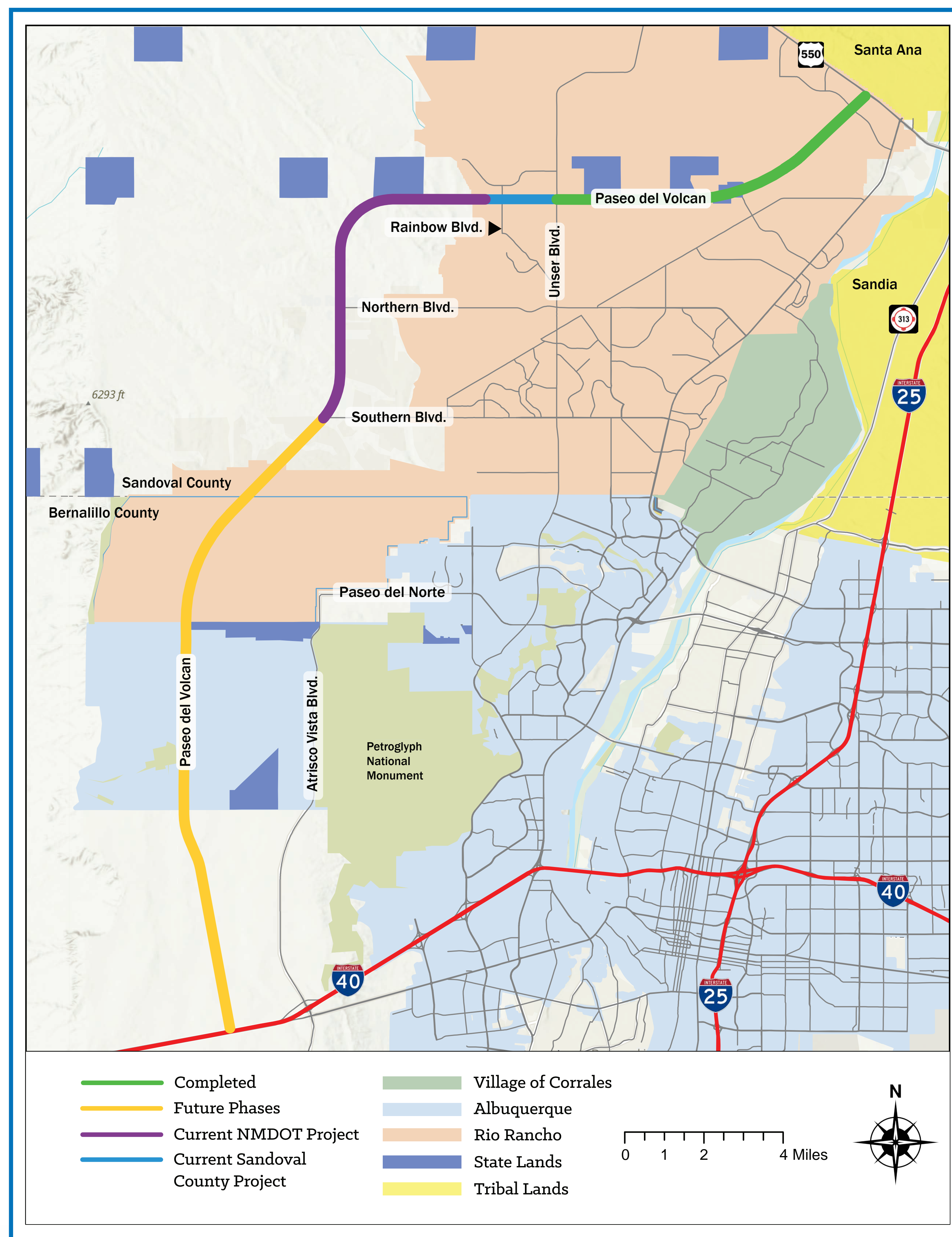
Why is NMDOT extending PDV?



U.S. Department of
Transportation
**Federal Highway
Administration**

Planning for PDV started over 25 years ago.

- The intent of PDV is to provide a northwest route connecting I-40 and US 550.
- The general property needs were identified by engineering and environmental studies prepared in the late 1990s and early 2000s.
- PDV has been part of the planned regional transportation system since 2002 when an Environmental Impact Statement (EIS) was prepared and approved by FHWA.



SP-7501(218) CN 2607
TP-4007(1)

Final Environmental Impact Statement

Paseo del Volcan

Bernalillo and Sandoval Counties, New Mexico

Lead Agencies



New Mexico State Highway
and Transportation Department

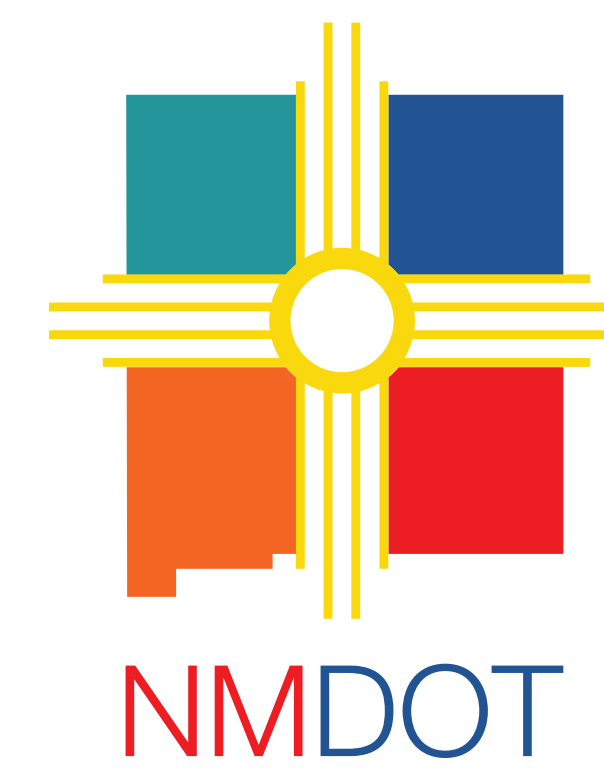


Federal Highway
Administration

June 2001

The EIS authorized right-of-way acquisition for a corridor along the alignment identified and the design development a 2-lane limited access road. The northern 7 miles has been constructed leaving an additional 22 miles to complete the connection to I-40.

Why is NMDOT extending PDV?



U.S. Department of
Transportation
**Federal Highway
Administration**

- **PDV will provide a north-south connection to the major east-west street network serving the Rio Rancho area.**

Why is this important?

Currently, there are no paved north-south streets serving the area west of Rainbow Blvd. This makes travel less efficient and unreliable.

- **PDV will provide improved access to jobs, schools, groceries, medical services, and other needs for persons living in the areas along 20th St. NW.**

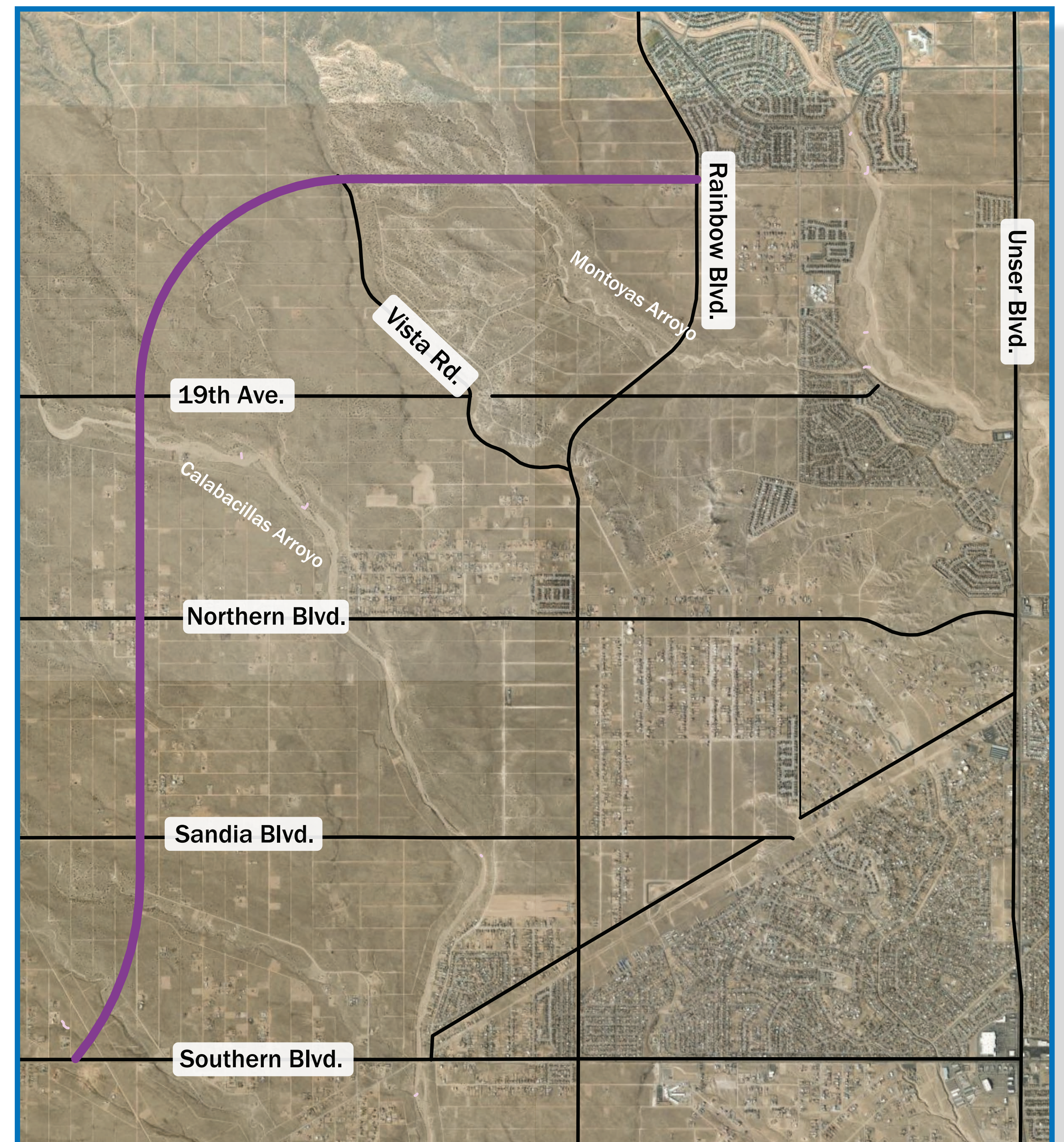
Why is this important?

Residents of this area currently use 20th St. and other unpaved roads to access Northern Blvd. and Southern Blvd. and travel into Rio Rancho and other parts of the metropolitan area. The lack of a reliable paved street makes this access more difficult and less reliable.

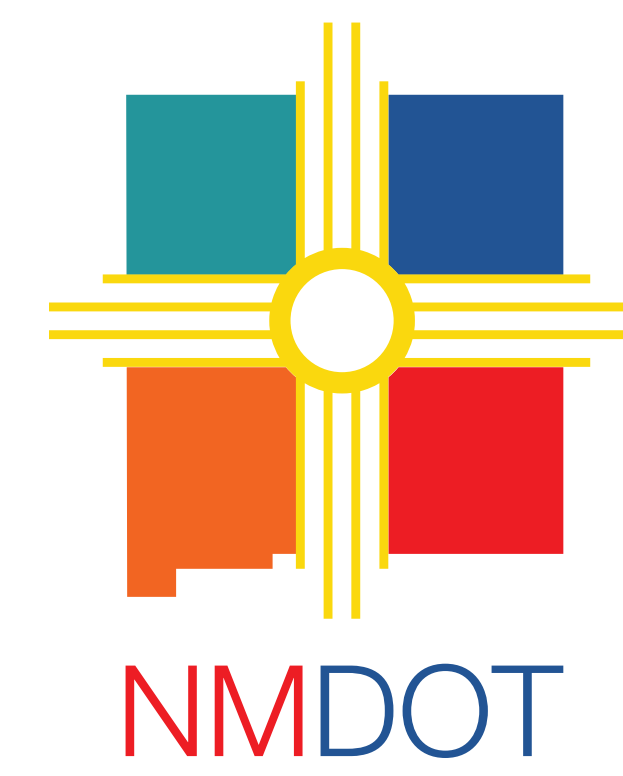
- **PDV will help provide more orderly growth and development within the unincorporated parts of Sandoval County.**

Why is this important?

Development that occurs without improved streets can be random and can prevent future development of an efficient street system. In addition, utilities such as water, natural gas, and underground electric lines rely on street rights-of-way to access developing areas. A major street provides the base structure for this.

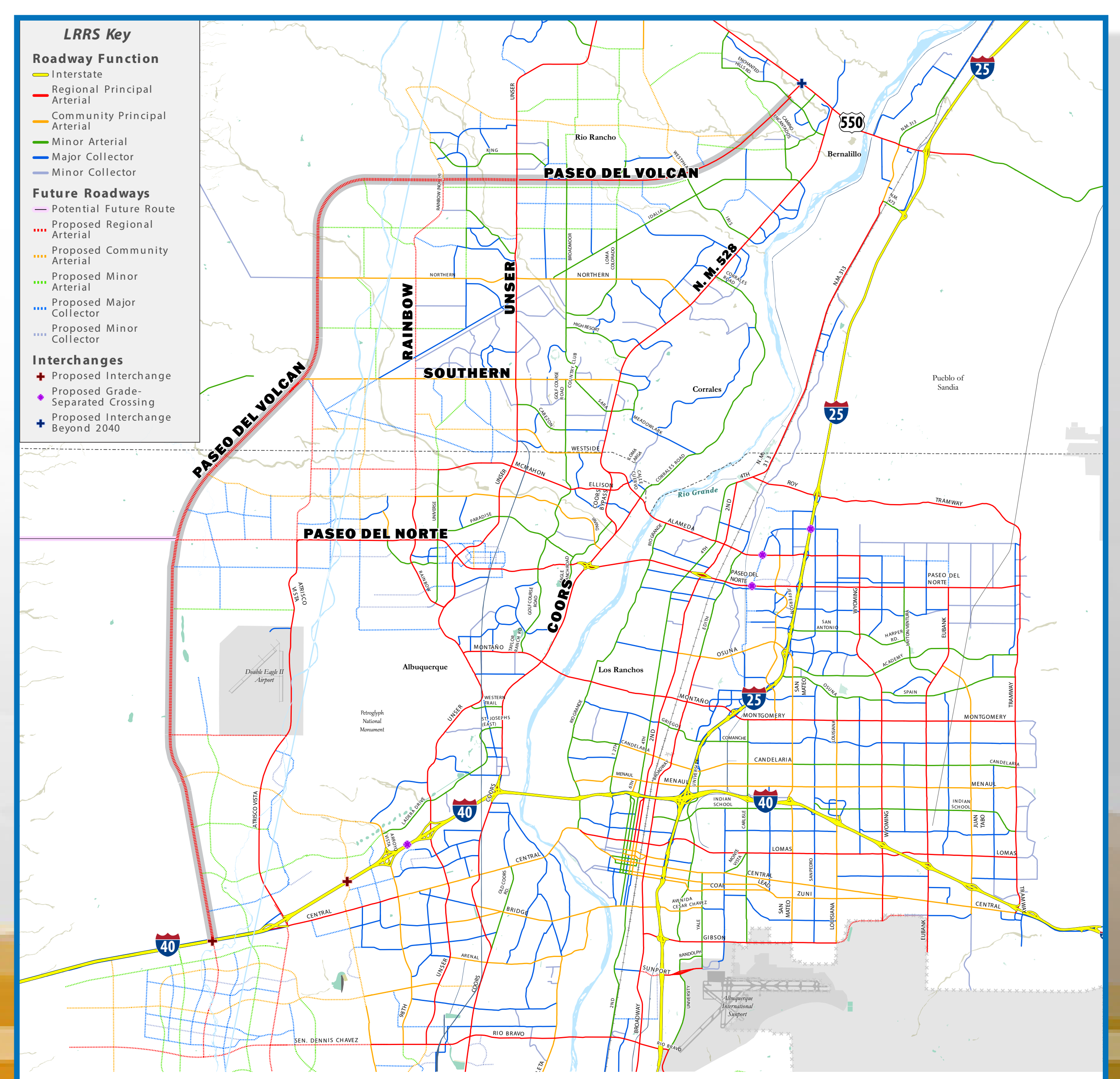
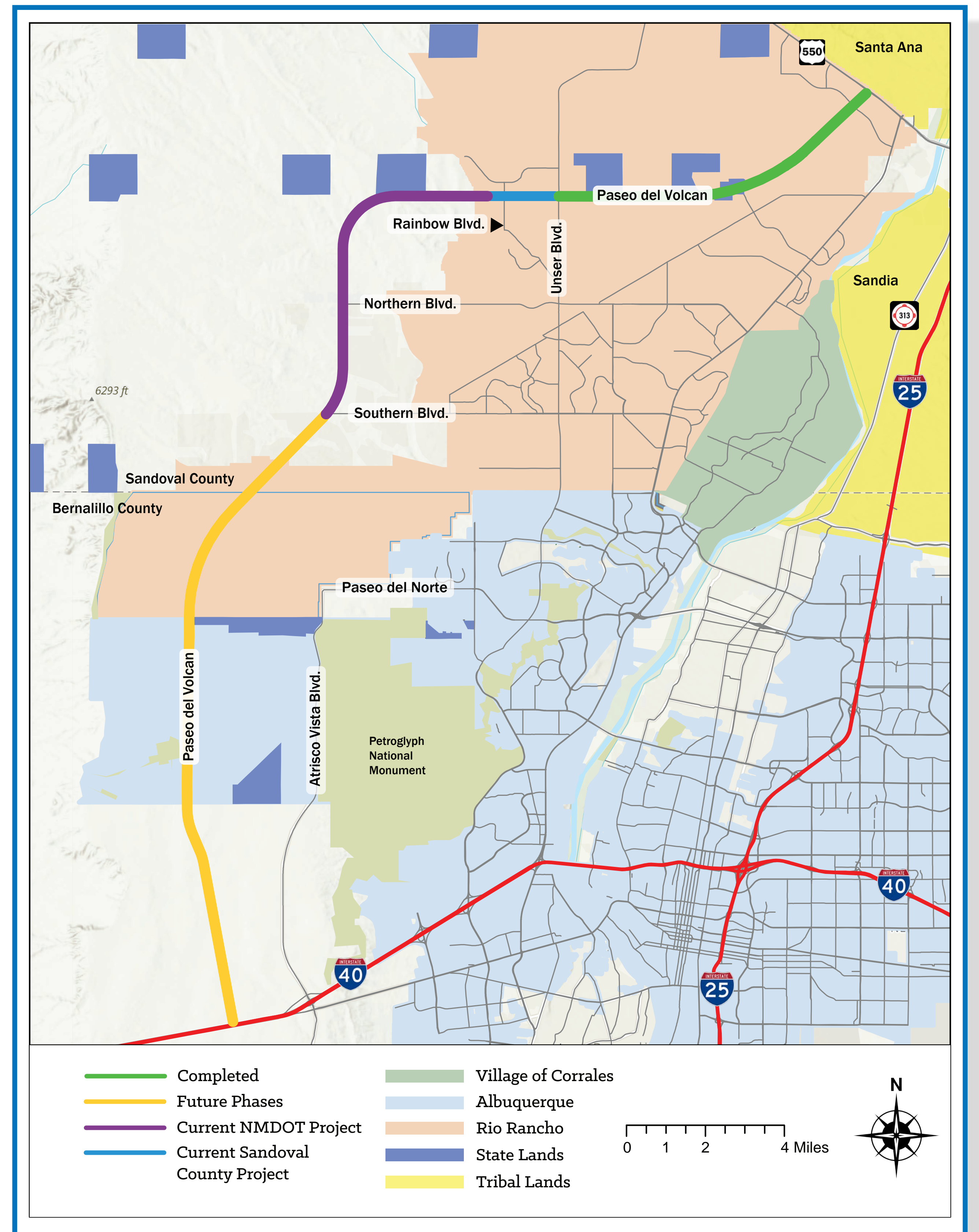


Project Location and Background

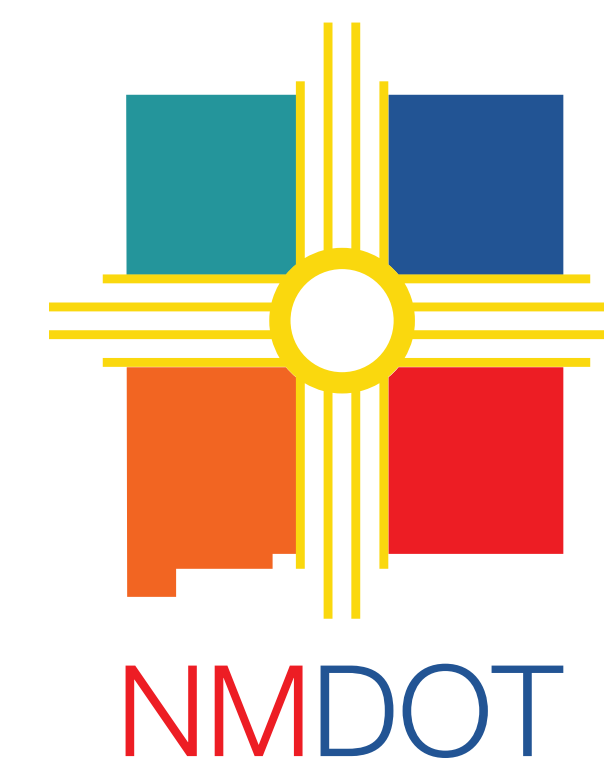


U.S. Department of
Transportation
**Federal Highway
Administration**

- PDV will serve as a major link in the Albuquerque/ Rio Rancho west side transportation system.
- PDV is being implemented in phases. The first phase from US 550 to Unser Blvd. was constructed about 15 years ago.
- Current effort (purple line) encompasses PDV corridor between Southern Blvd. and Rainbow Blvd.
- Segment of PDV between Rainbow Blvd. and Unser Blvd. (blue line) is being advanced by Sandoval County.
- Right-of-Way advanced under a separate project. Is significantly complete.



Previous Public Input



U.S. Department of
Transportation
**Federal Highway
Administration**



**PASEO DEL VOLCAN (NM 347)
ROAD EXTENSION STUDY**
RAINBOW BLVD. TO SOUTHERN BLVD. SANDOVAL COUNTY
PUBLIC OPEN HOUSE

You're invited to an in-person open house for the Paseo del Volcan (PDV) Roadway Extension Study.

The NMDOT is performing this study of PDV from Rainbow Blvd. south 7.5 miles to Southern Blvd. The purpose of this study is to determine the configuration and alignment of the proposed roadway. Please share your questions and comments with our team to help inform the development of the roadway extension.

To send comments, join the mailing list, and stay connected, visit:
<https://www.dot.nm.gov/projects/paseo-del-volcan/> or scan the QR code below.

The comment period is open until September 14th, 2024.

Habr  un traductor disponible en la jornada de puertas abiertas al p blico. Para acceder a los materiales en espa ol, visite el sitio web mencionado anteriormente. Los comentarios en espa ol tambi n pueden enviarse a PDV@parametrix.com

To request accommodations under the Americans with Disabilities Act or a translator, please call Tyler Pennington at 505-288-7518 by August 9th, 2024.

When: August 14th, 2024
Our team will be available from 3:00 PM to 7:00 PM
Where: Star Heights Recreation Center
Address: 800 Polaris Blvd.
Rio Rancho, NM 87124

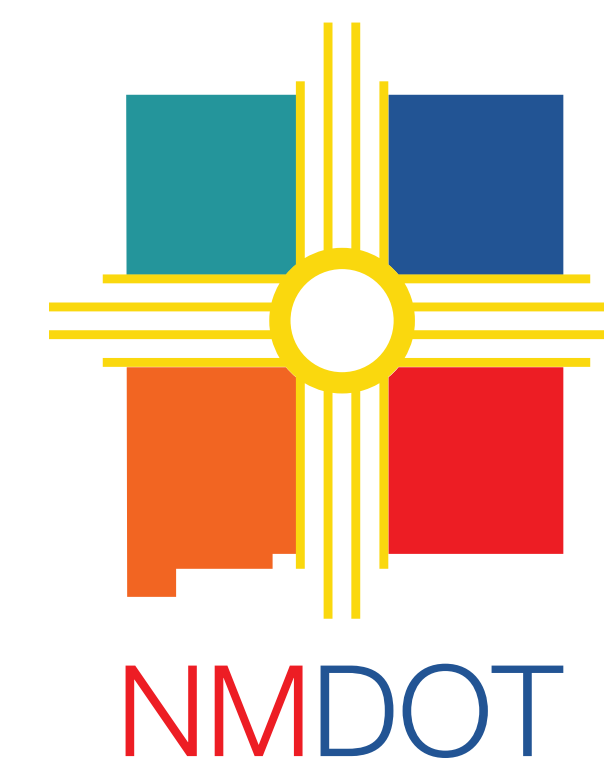
Approximate PDV Alignment:
Northern Limit of Study
28th Ave.
Vista Rd.
Rainbow Blvd.
Northern Blvd.
Approximate PDV Alignment
Sandia Blvd.
Southern Limit of Study
Southern Blvd.
Potential Future Phase
Idalia Rd.

Join the mailing list:

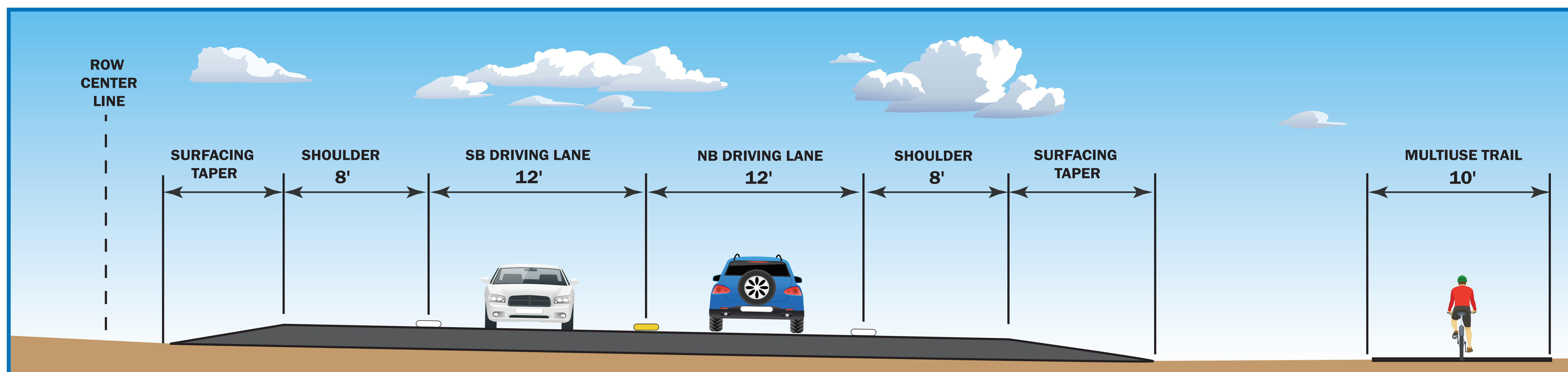
Control Number A301573

- A survey to alert residents and potential users of NM 347 was conducted in June of 2024
- A total of 191 responses were received on this survey
- A public open house was held on August 14th, 2024 that was attended by 26 interested community members
- Survey responses and questions asked at the last meeting
 - Problems crossing arroyos due to water flow, mud after storms, and sand
 - Poor condition of existing roads and lack of maintenance
 - Desire street lighting at major intersections (and concern with street lighting)
 - Desire for a paved bicycle/pedestrian path and use of road shoulders for bikes
 - Concern with increased traffic and noise
 - Loss of access to bulk fill water station on Northern and 21st St

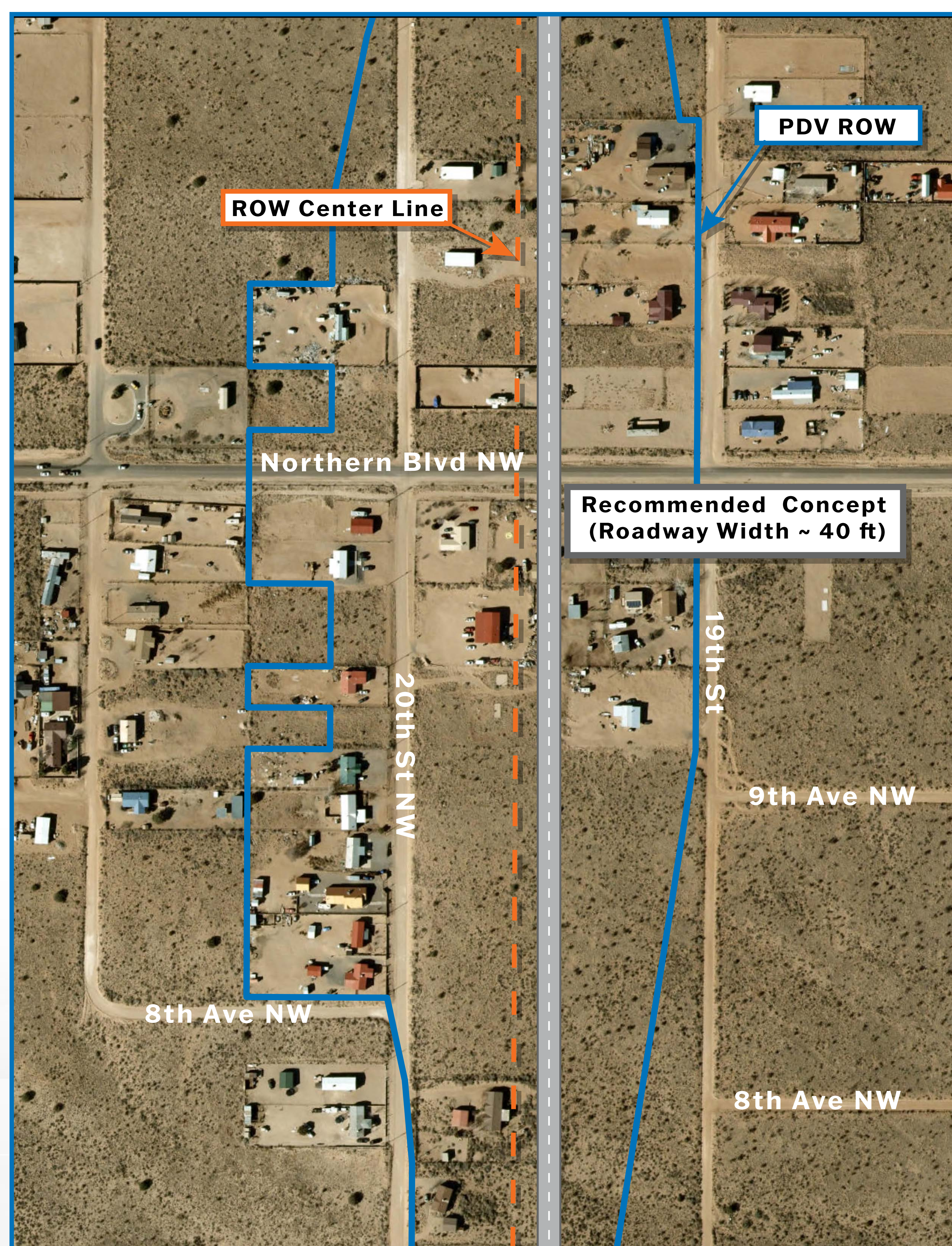
Recommended Alternative



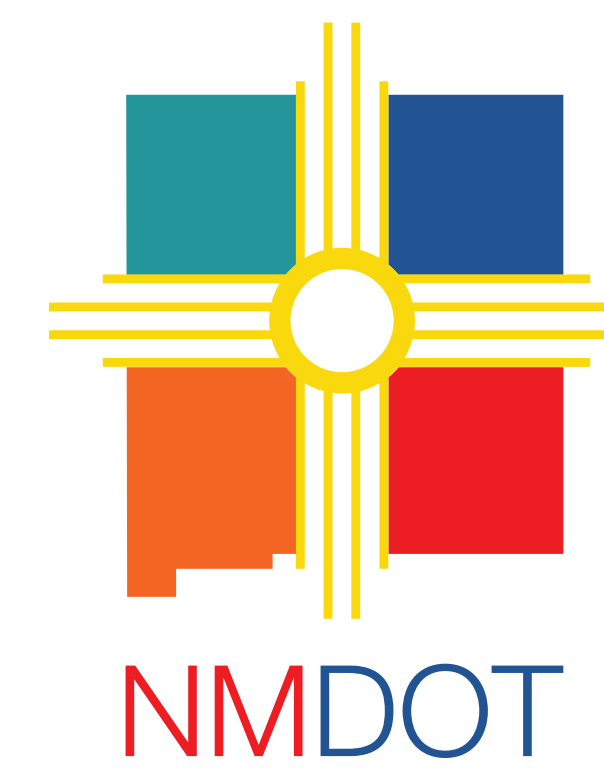
U.S. Department of
Transportation
**Federal Highway
Administration**



Acquisition of right-of-way (ROW) for PDV has been underway for many years and is nearly complete. The right-of-way encompasses a swath approximately 400 feet wide, except at major intersections where it is much wider.



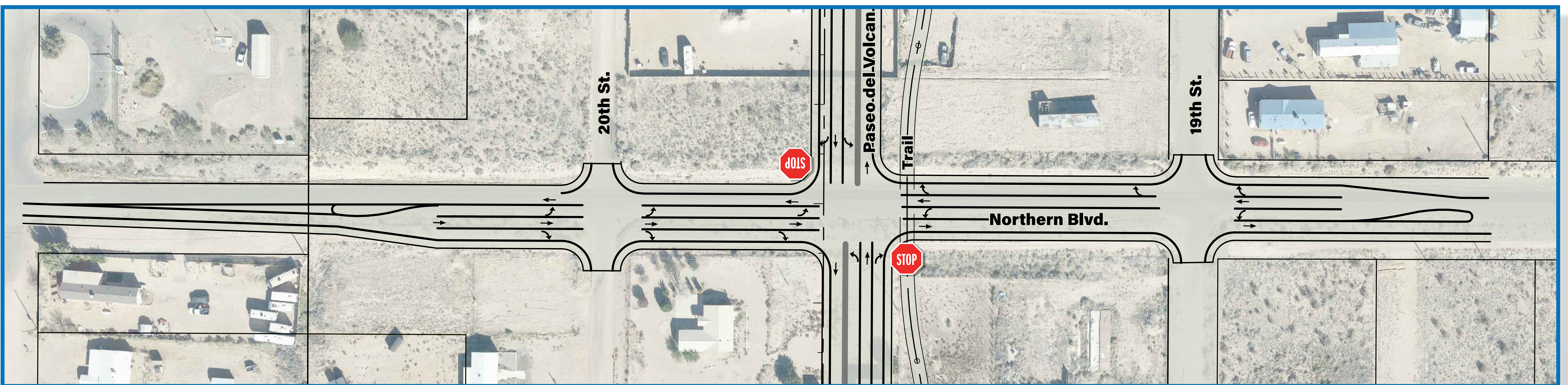
Intersections



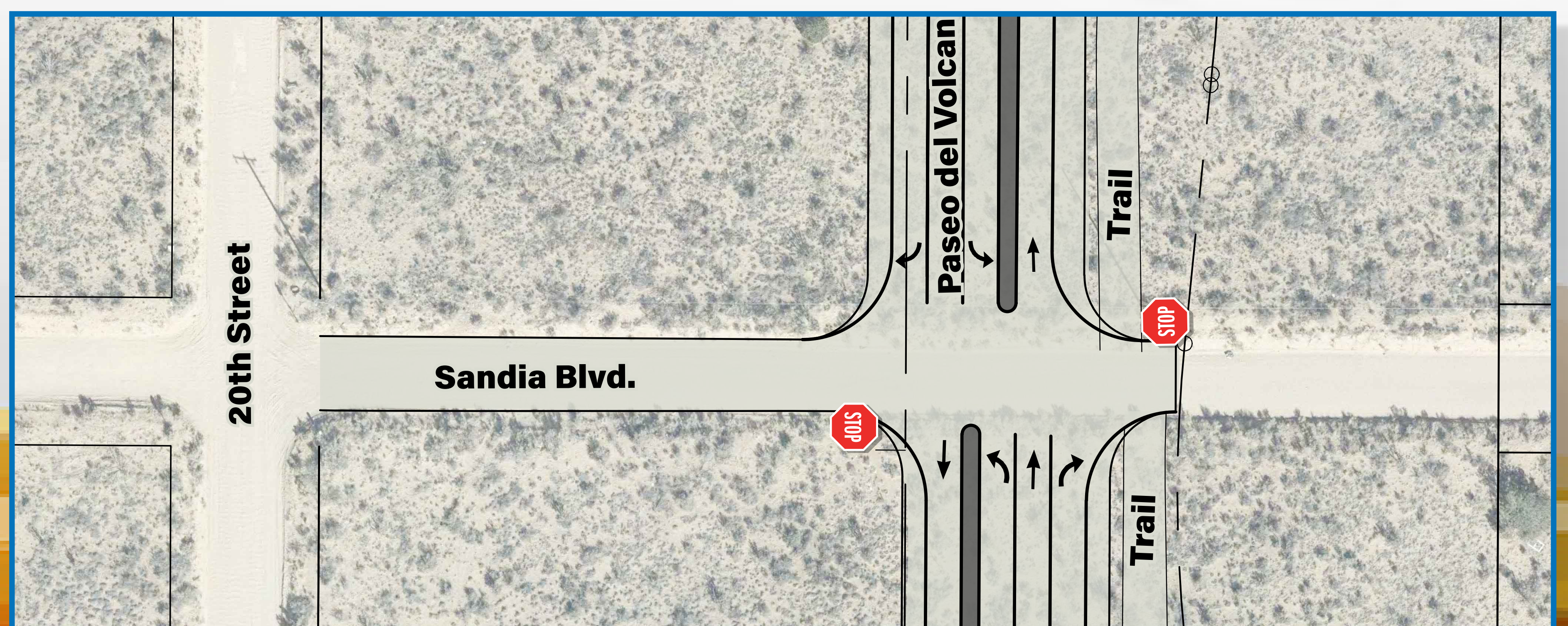
Southern Blvd. is realigned approaching PDV to improve driver visibility at the intersection. Paseo del Volcan will be stop controlled at this intersection, allowing existing traffic on Southern Blvd. to continue without stopping.



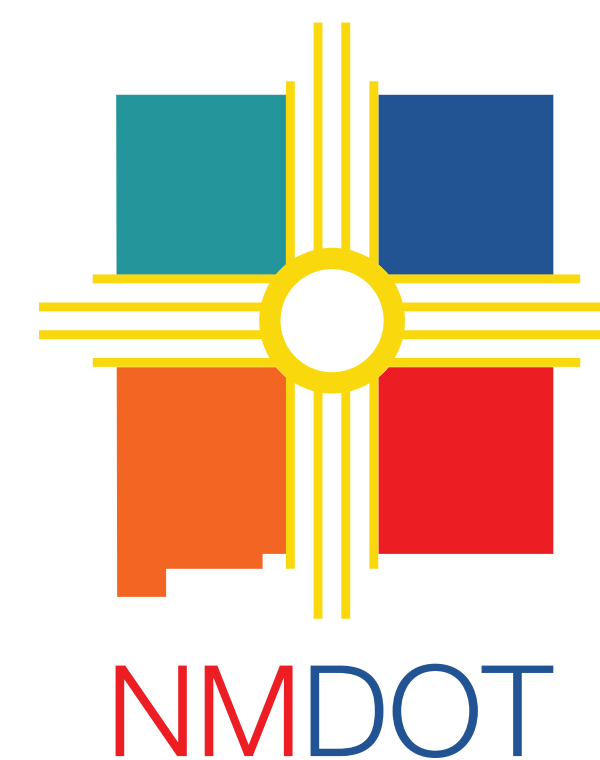
Northern Blvd. is reconstructed from just east of 19th St. to west of 20th St. to provide safe access at these two cross streets. Paseo del Volcan will be stop controlled at this intersection, allowing existing traffic on Northern Blvd. to continue without stopping.



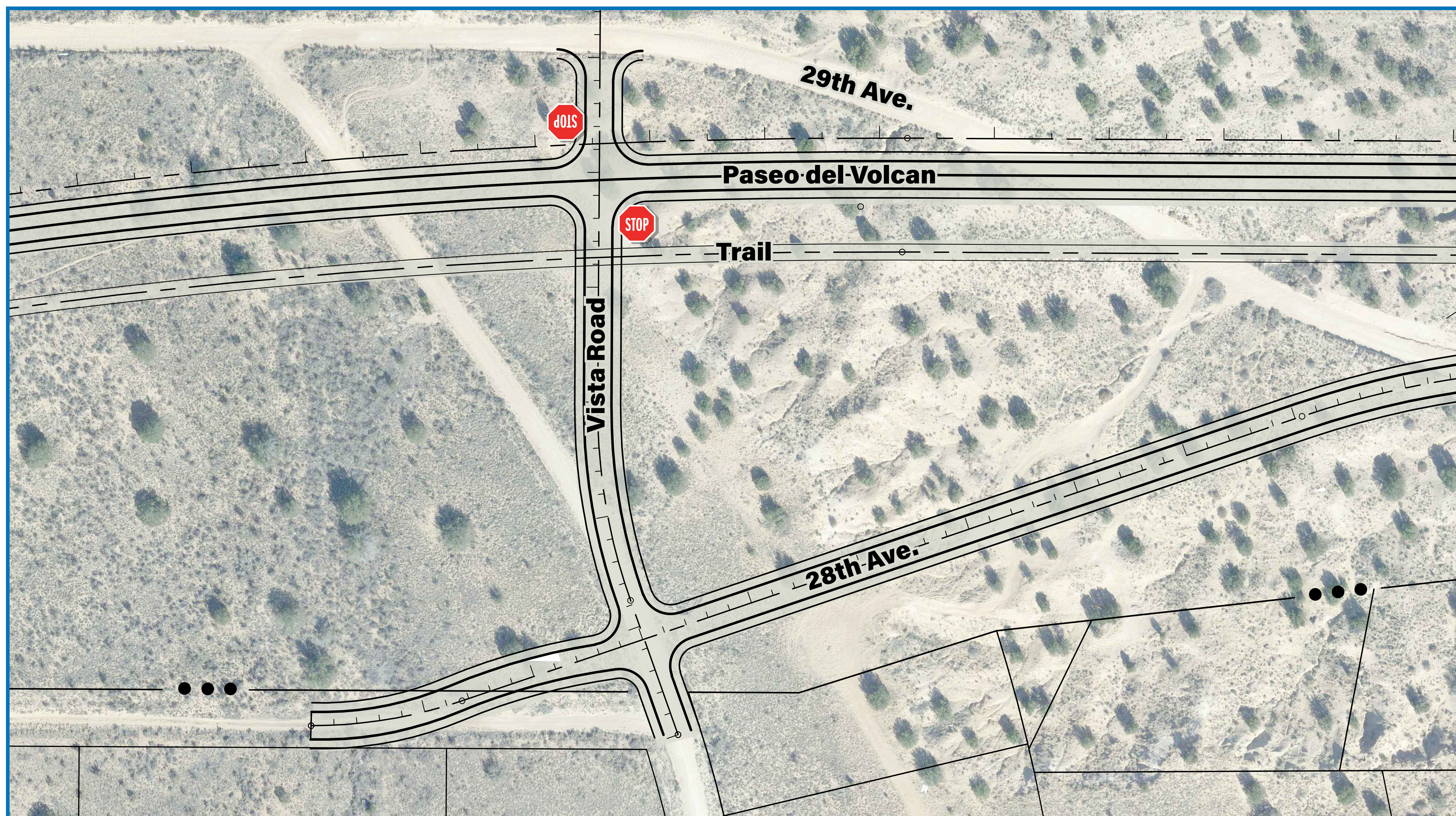
Sandia Blvd. and 19th Ave. will be connected to PDV as future major access points. Sandia Blvd. and 19th Ave. will be stop controlled.



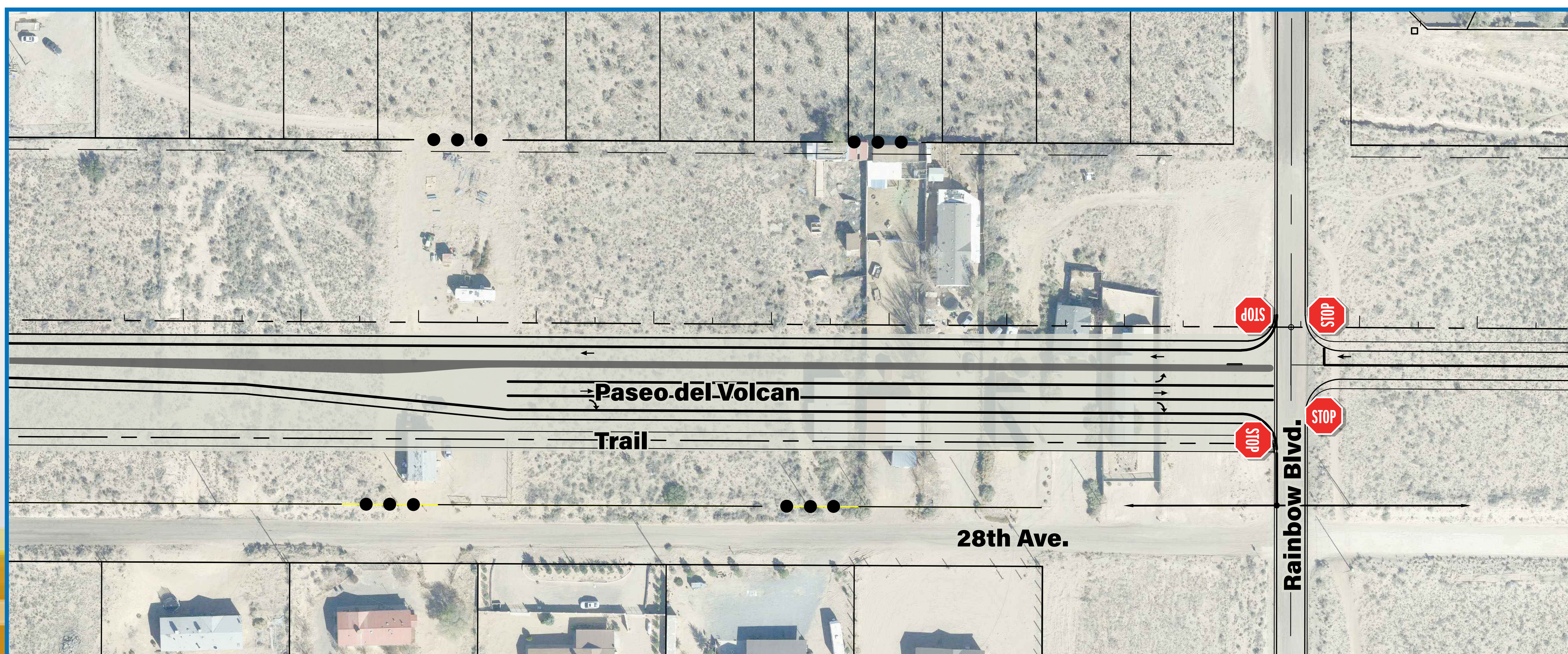
Intersections



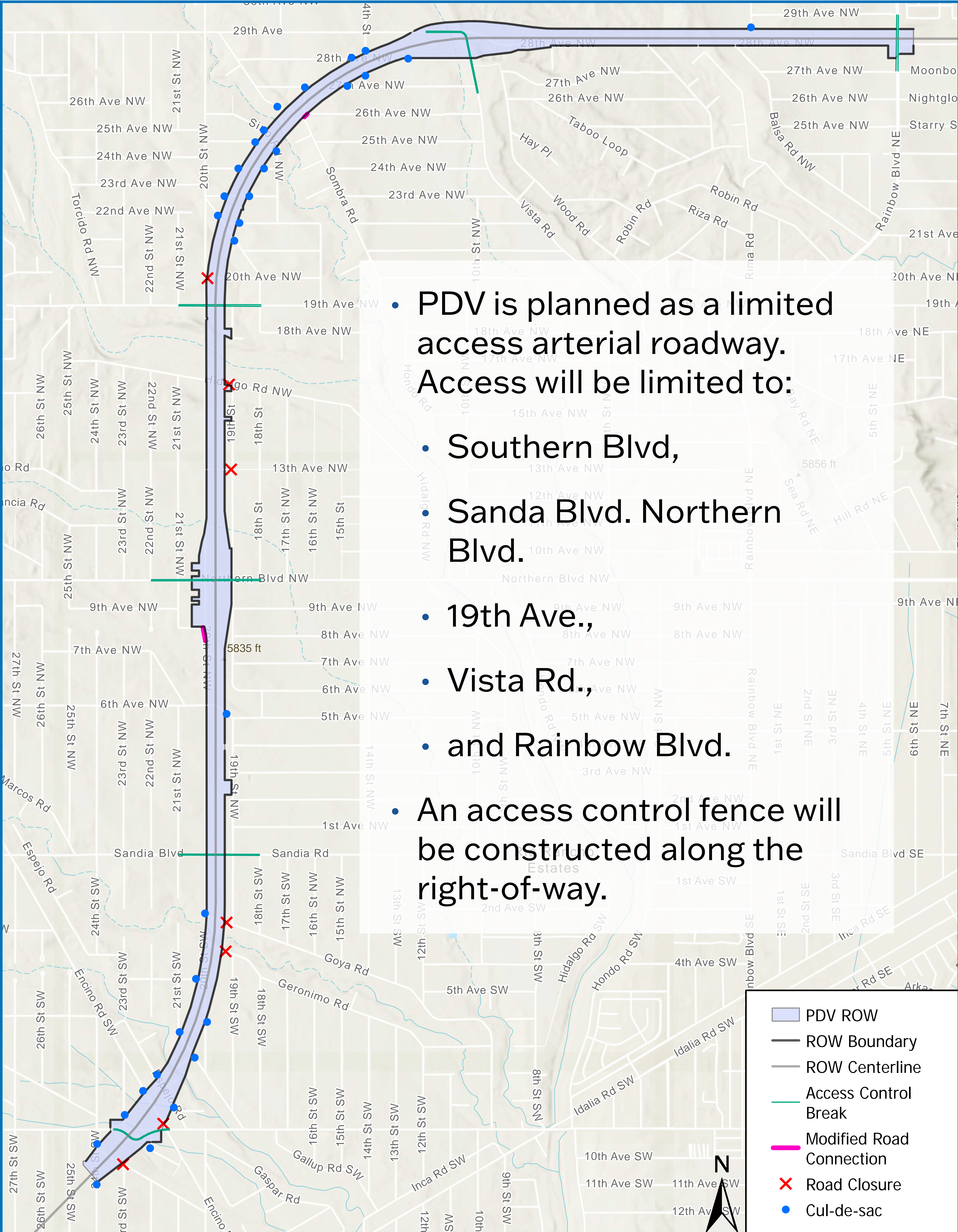
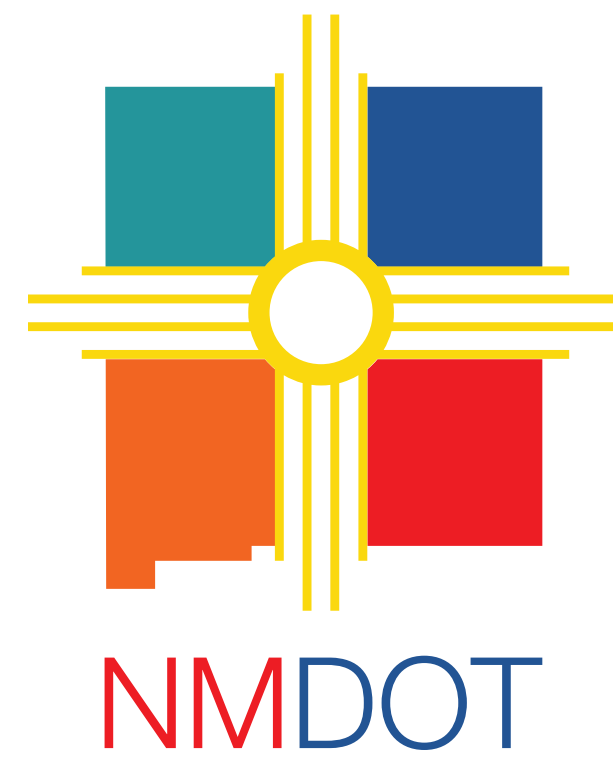
Both 29th Ave. and 28th Ave. are realigned approaching Vista Road traffic on PDV will not stop. Stop signs will be placed on Vista Rd.



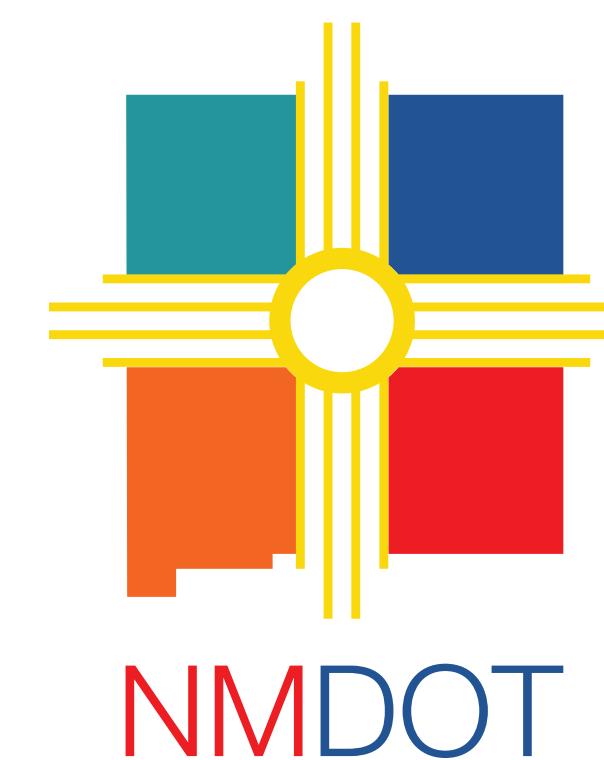
Intersection of PDV and Rainbow Blvd. will be a 4-way stop controlled.



Access Management and Right-of-Way



How to Comment and Next Steps



U.S. Department
of Transportation
**Federal Highway
Administration**

Thank you for attending this Public meeting. The NMDOT welcomes your questions and comments about the PDV Extension and the information shared at this meeting.

The PDV Extension is part of a larger regional corridor with an established alignment. However, public input is still desired for the roadway design concept including alignment within the right-of-way and features of the roadway such as intersection design, lighting, access, bicycle and pedestrian facilities, and other related items.

Next Steps and Timeline

- SUMMER 2025** • A recommended alternative was shared with stakeholders.
 - Public meeting presented the recommended alternative to the public.
- FALL 2025** • Refine and/or modify the recommended alternative as appropriate based on feedback from the public/stakeholders.
 - Finalize the Phase 1 A/B Report.
- WINTER 2025** • Commence with preliminary and final design
- EARLY 2026** • Complete environmental documentation and consultation with NM State Historic Preservation Officer.