

# **Appendix M**

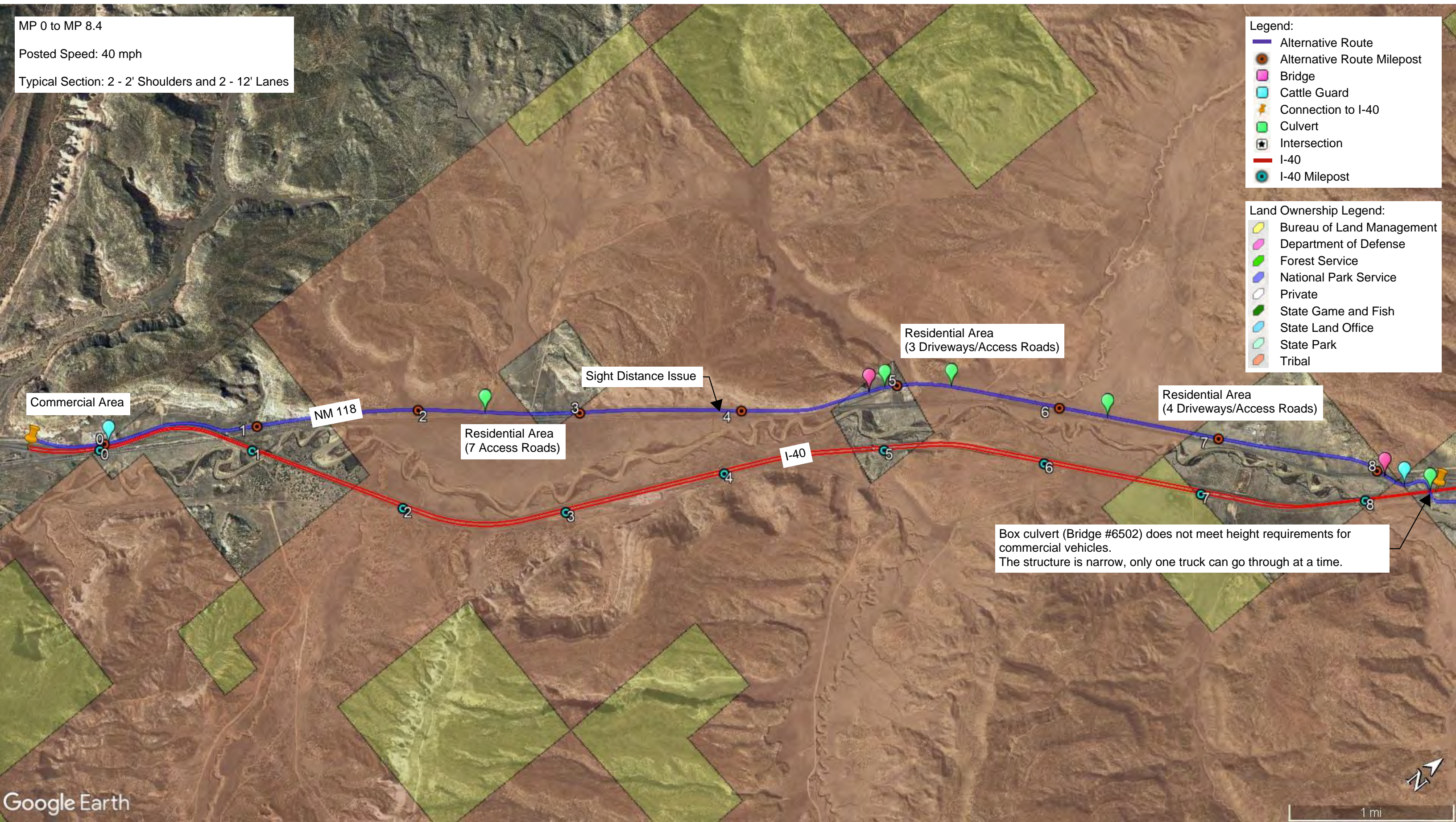
## Alternate Routes



MP 0 to MP 8.4  
 Posted Speed: 40 mph  
 Typical Section: 2 - 2' Shoulders and 2 - 12' Lanes

- Legend:**
- Alternative Route
  - Alternative Route Milepost
  - Bridge
  - Cattle Guard
  - ★ Connection to I-40
  - Culvert
  - ★ Intersection
  - I-40
  - I-40 Milepost

- Land Ownership Legend:**
- Bureau of Land Management
  - Department of Defense
  - Forest Service
  - National Park Service
  - Private
  - State Game and Fish
  - State Land Office
  - State Park
  - Tribal

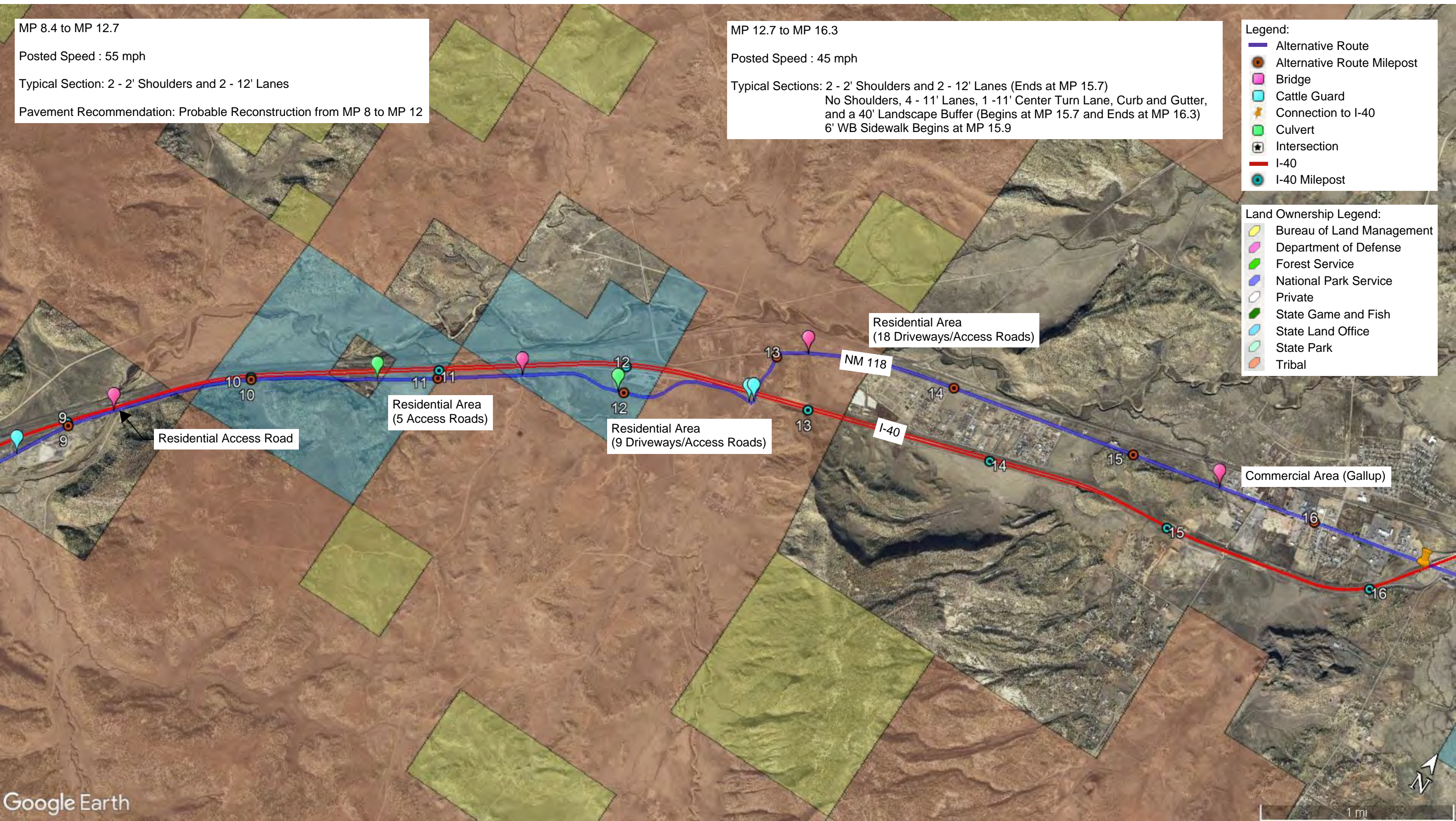


MP 8.4 to MP 12.7  
 Posted Speed : 55 mph  
 Typical Section: 2 - 2' Shoulders and 2 - 12' Lanes  
 Pavement Recommendation: Probable Reconstruction from MP 8 to MP 12

MP 12.7 to MP 16.3  
 Posted Speed : 45 mph  
 Typical Sections: 2 - 2' Shoulders and 2 - 12' Lanes (Ends at MP 15.7)  
 No Shoulders, 4 - 11' Lanes, 1 -11' Center Turn Lane, Curb and Gutter, and a 40' Landscape Buffer (Begins at MP 15.7 and Ends at MP 16.3)  
 6' WB Sidewalk Begins at MP 15.9

- Legend:
- Alternative Route
  - Alternative Route Milepost
  - Bridge
  - Cattle Guard
  - ★ Connection to I-40
  - Culvert
  - Intersection
  - I-40
  - I-40 Milepost

- Land Ownership Legend:
- Bureau of Land Management
  - Department of Defense
  - Forest Service
  - National Park Service
  - Private
  - State Game and Fish
  - State Land Office
  - State Park
  - Tribal



MP 16.3 to MP 25.9

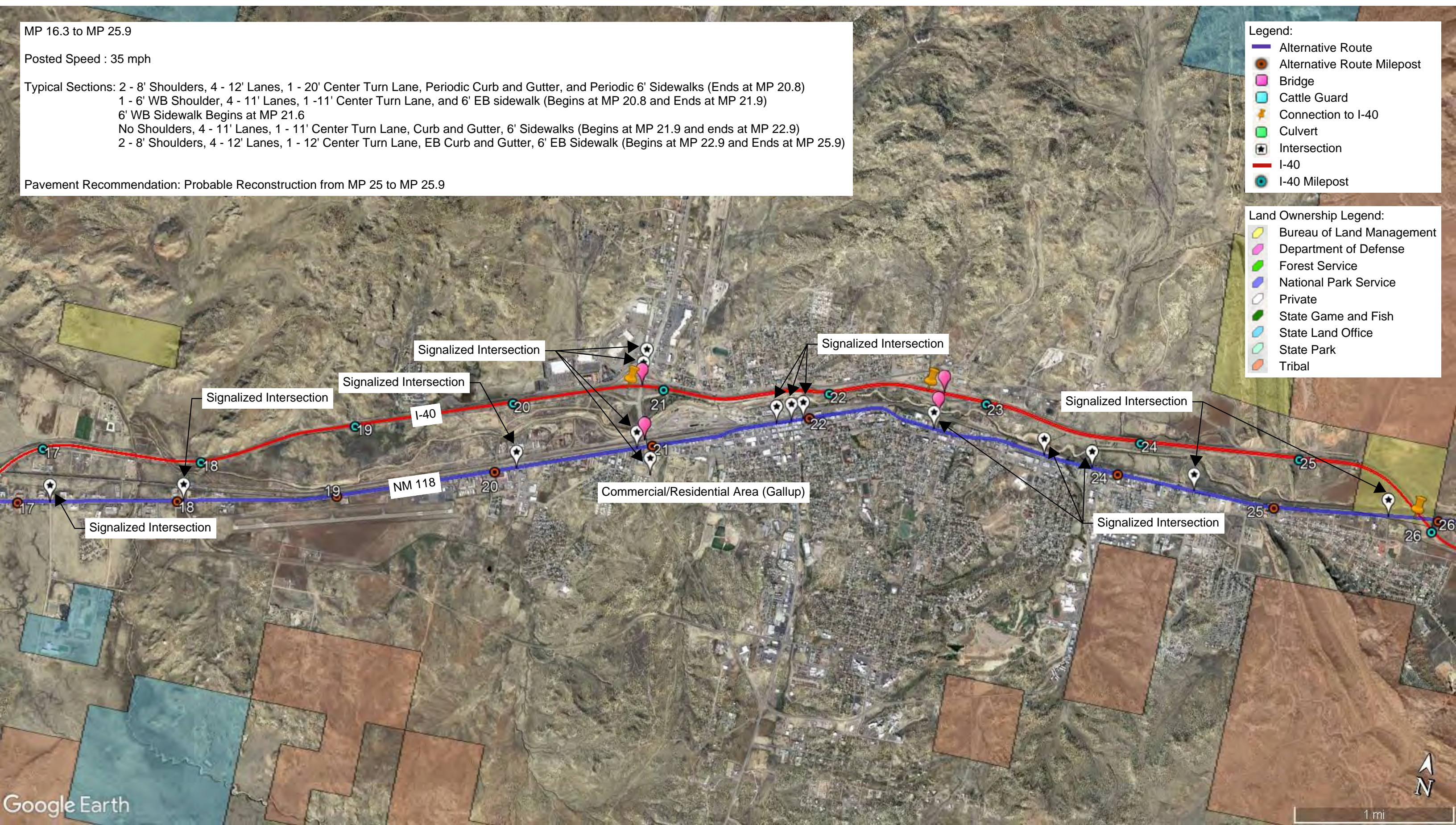
Posted Speed : 35 mph

Typical Sections: 2 - 8' Shoulders, 4 - 12' Lanes, 1 - 20' Center Turn Lane, Periodic Curb and Gutter, and Periodic 6' Sidewalks (Ends at MP 20.8)  
1 - 6' WB Shoulder, 4 - 11' Lanes, 1 - 11' Center Turn Lane, and 6' EB sidewalk (Begins at MP 20.8 and Ends at MP 21.9)  
6' WB Sidewalk Begins at MP 21.6  
No Shoulders, 4 - 11' Lanes, 1 - 11' Center Turn Lane, Curb and Gutter, 6' Sidewalks (Begins at MP 21.9 and ends at MP 22.9)  
2 - 8' Shoulders, 4 - 12' Lanes, 1 - 12' Center Turn Lane, EB Curb and Gutter, 6' EB Sidewalk (Begins at MP 22.9 and Ends at MP 25.9)

Pavement Recommendation: Probable Reconstruction from MP 25 to MP 25.9

- Legend:
- Alternative Route
  - Alternative Route Milepost
  - Bridge
  - Cattle Guard
  - Connection to I-40
  - Culvert
  - Intersection
  - I-40
  - I-40 Milepost

- Land Ownership Legend:
- Bureau of Land Management
  - Department of Defense
  - Forest Service
  - National Park Service
  - Private
  - State Game and Fish
  - State Land Office
  - State Park
  - Tribal



MP 25.9 to MP 37

Posted Speed : 55 mph

Typical Sections: 2 - 12' Shoulders, 4 - 12' Lanes, and 16' Median (Ends at MP 26.1)  
2 - 8' Shoulders, 4 - 12' Lanes, 1 - 12' Center Turn Lane, EB Curb and Gutter, a 6' EB Sidewalk (Begins at MP 26.1 and Ends at MP 26.4)  
2 - 8' Shoulders, 4 - 12' Lanes, 1 - 12' Center Turn Lane (Begins at MP 26.4 and Ends at MP 27.5)  
2 - 2' Shoulders and 2 - 12' Lanes (Begins at MP 27.5 and Ends at MP 37)

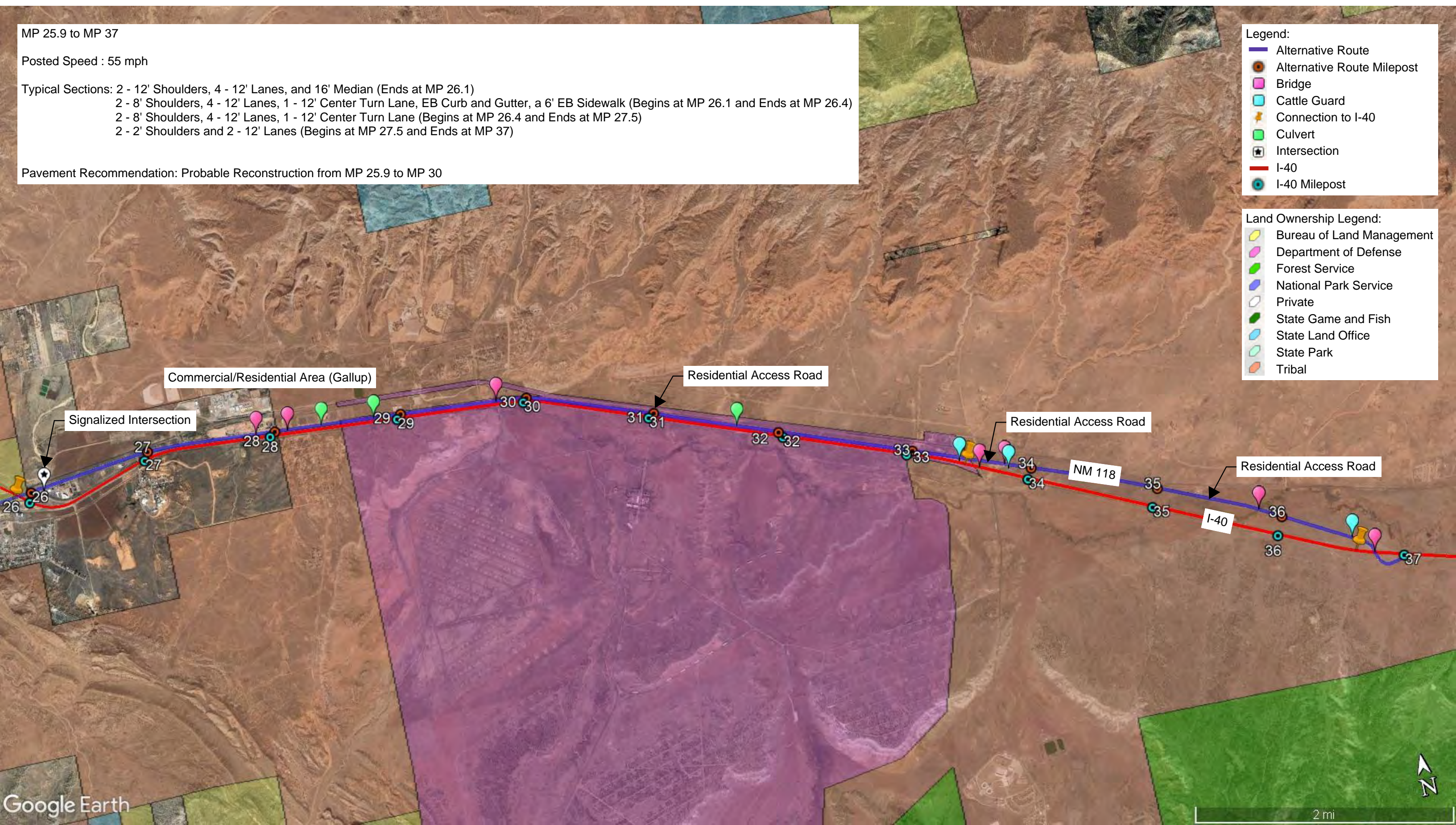
Pavement Recommendation: Probable Reconstruction from MP 25.9 to MP 30

**Legend:**

- Alternative Route
- Alternative Route Milepost
- Bridge
- Cattle Guard
- Connection to I-40
- Culvert
- Intersection
- I-40
- I-40 Milepost

**Land Ownership Legend:**

- Bureau of Land Management
- Department of Defense
- Forest Service
- National Park Service
- Private
- State Game and Fish
- State Land Office
- State Park
- Tribal



MP 48 to MP 84.6  
 Posted Speed: 55 mph  
 Typical Sections: 2 - 2' Shoulders and 2 - 12' Lanes (Ends at MP 70.5)  
 4 - 2' Shoulders, 4 - 12' Lanes, a 36' Median, Periodic Curb and Gutter, Periodic 6' Sidewalks (Begins at MP 70.5)

- Legend:
- Alternative Route
  - Alternative Route Milepost
  - Bridge
  - Cattle Guard
  - ★ Connection to I-40
  - Culvert
  - ★ Intersection
  - I-40
  - I-40 Milepost

- Land Ownership Legend:
- Bureau of Land Management
  - Department of Defense
  - Forest Service
  - National Park Service
  - Private
  - State Game and Fish
  - State Land Office
  - State Park
  - Tribal



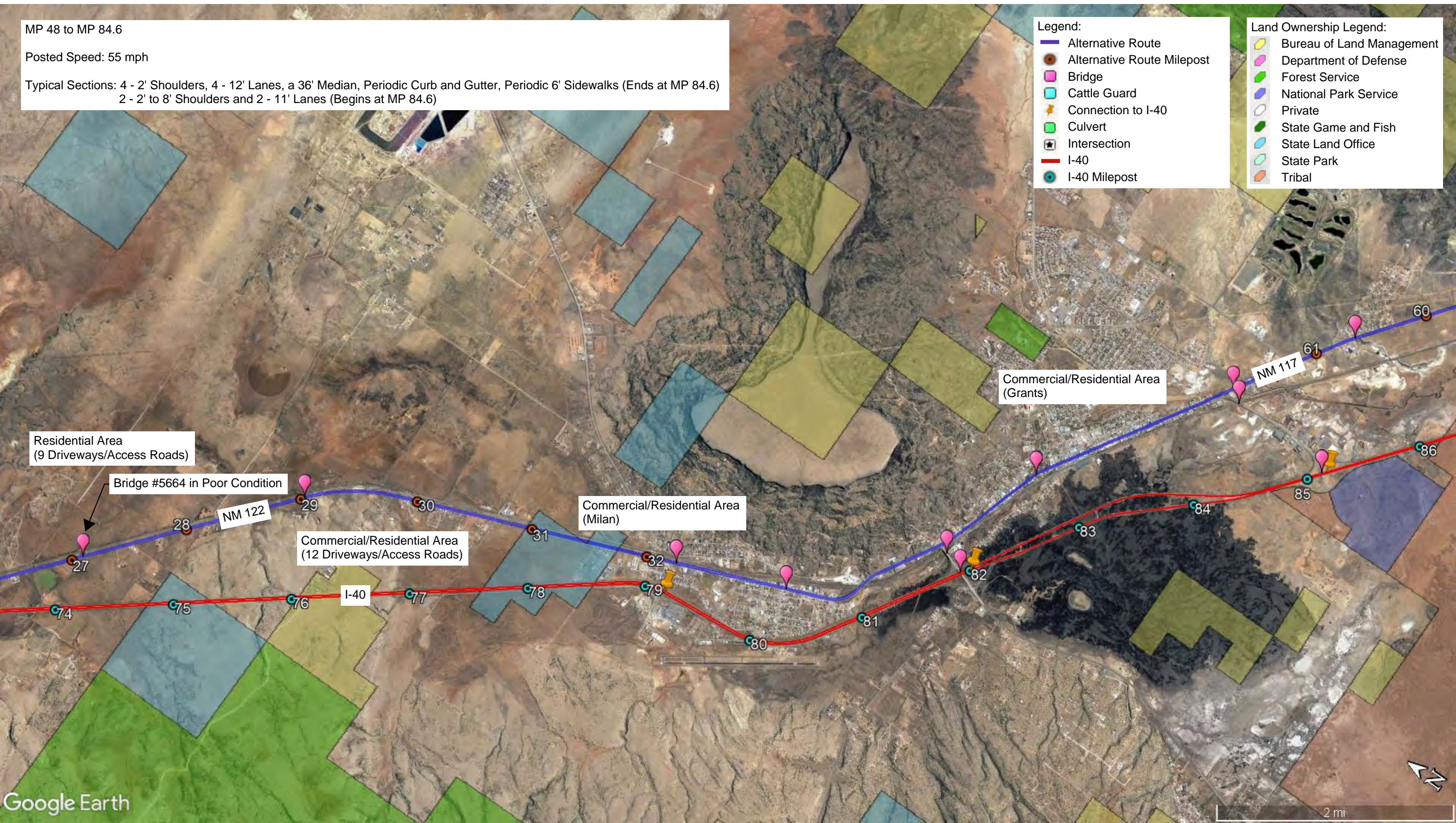
MP 48 to MP 84.6  
 Posted Speed: 55 mph  
 Typical Sections: 4 - 2' Shoulders, 4 - 12' Lanes, a 36' Median, Periodic Curb and Gutter, Periodic 6' Sidewalks (Ends at MP 84.6)  
 2 - 2' to 8' Shoulders and 2 - 11' Lanes (Begins at MP 84.6)

**Legend:**

- Alternative Route
- Alternative Route Milepost
- Bridge
- Cattle Guard
- Connection to I-40
- Culvert
- Intersection
- I-40
- I-40 Milepost

**Land Ownership Legend:**

- Bureau of Land Management
- Department of Defense
- Forest Service
- National Park Service
- Private
- State Game and Fish
- State Land Office
- State Park
- Tribal

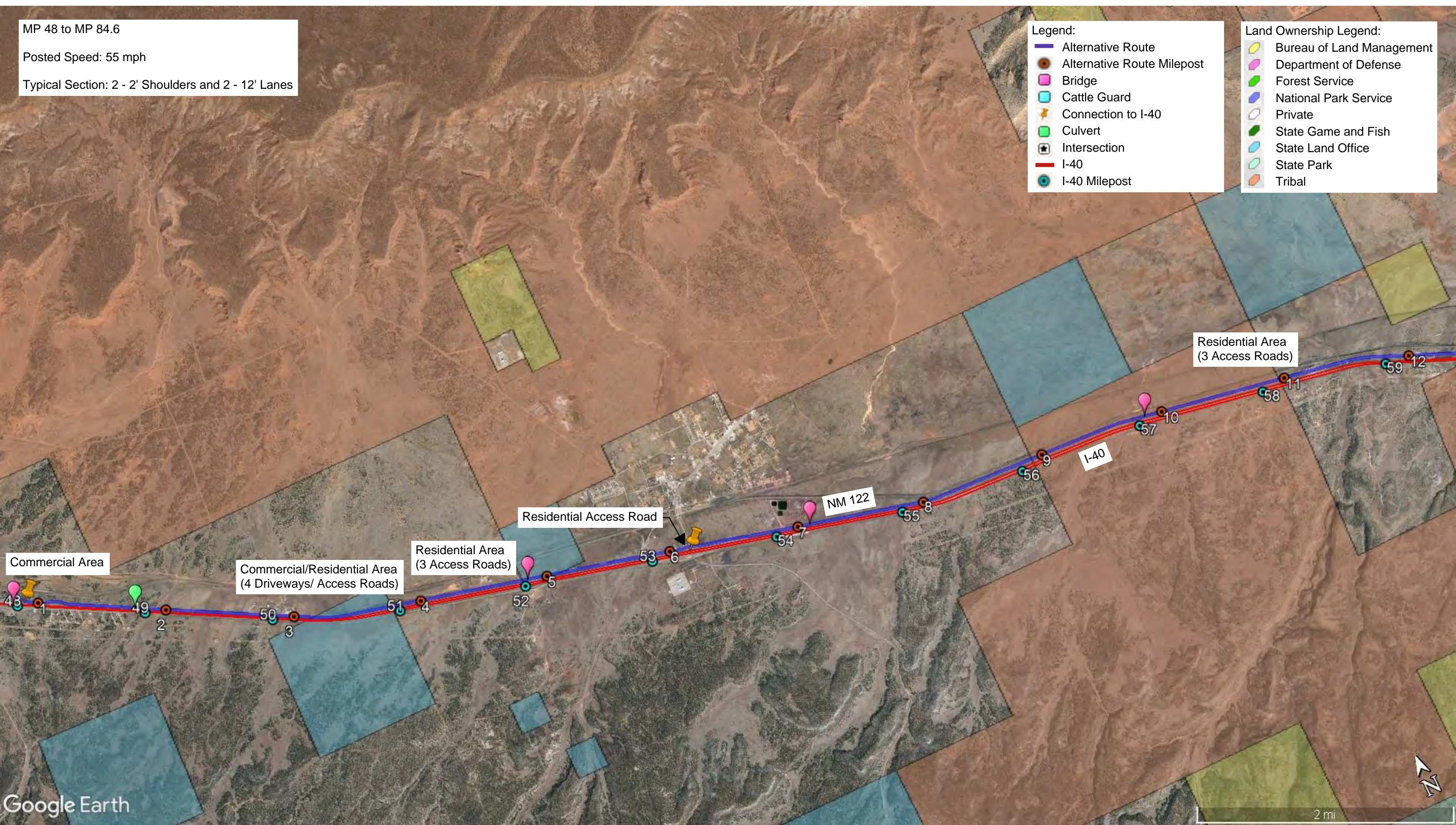




MP 48 to MP 84.6  
 Posted Speed: 55 mph  
 Typical Section: 2 - 2' Shoulders and 2 - 12' Lanes

- Legend:**
- Alternative Route
  - Alternative Route Milepost
  - Bridge
  - Cattle Guard
  - ★ Connection to I-40
  - Culvert
  - Intersection
  - I-40
  - I-40 Milepost

- Land Ownership Legend:**
- Bureau of Land Management
  - Department of Defense
  - Forest Service
  - National Park Service
  - Private
  - State Game and Fish
  - State Land Office
  - State Park
  - Tribal

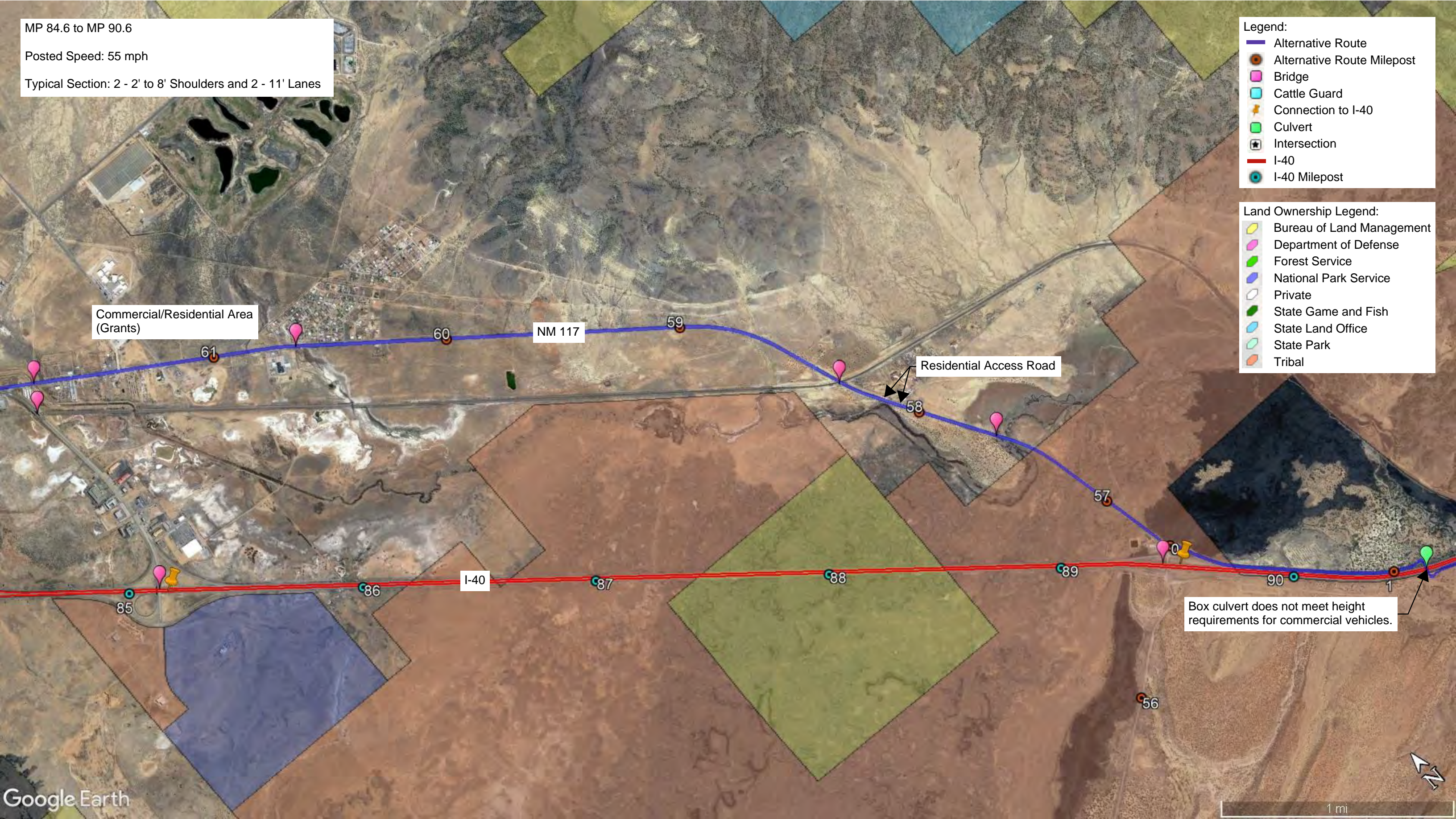


Google Earth

MP 84.6 to MP 90.6  
 Posted Speed: 55 mph  
 Typical Section: 2 - 2' to 8' Shoulders and 2 - 11' Lanes

- Legend:
- Alternative Route
  - Alternative Route Milepost
  - Bridge
  - Cattle Guard
  - ★ Connection to I-40
  - Culvert
  - ★ Intersection
  - I-40
  - I-40 Milepost

- Land Ownership Legend:
- Bureau of Land Management
  - Department of Defense
  - Forest Service
  - National Park Service
  - Private
  - State Game and Fish
  - State Land Office
  - State Park
  - Tribal



Commercial/Residential Area (Grants)

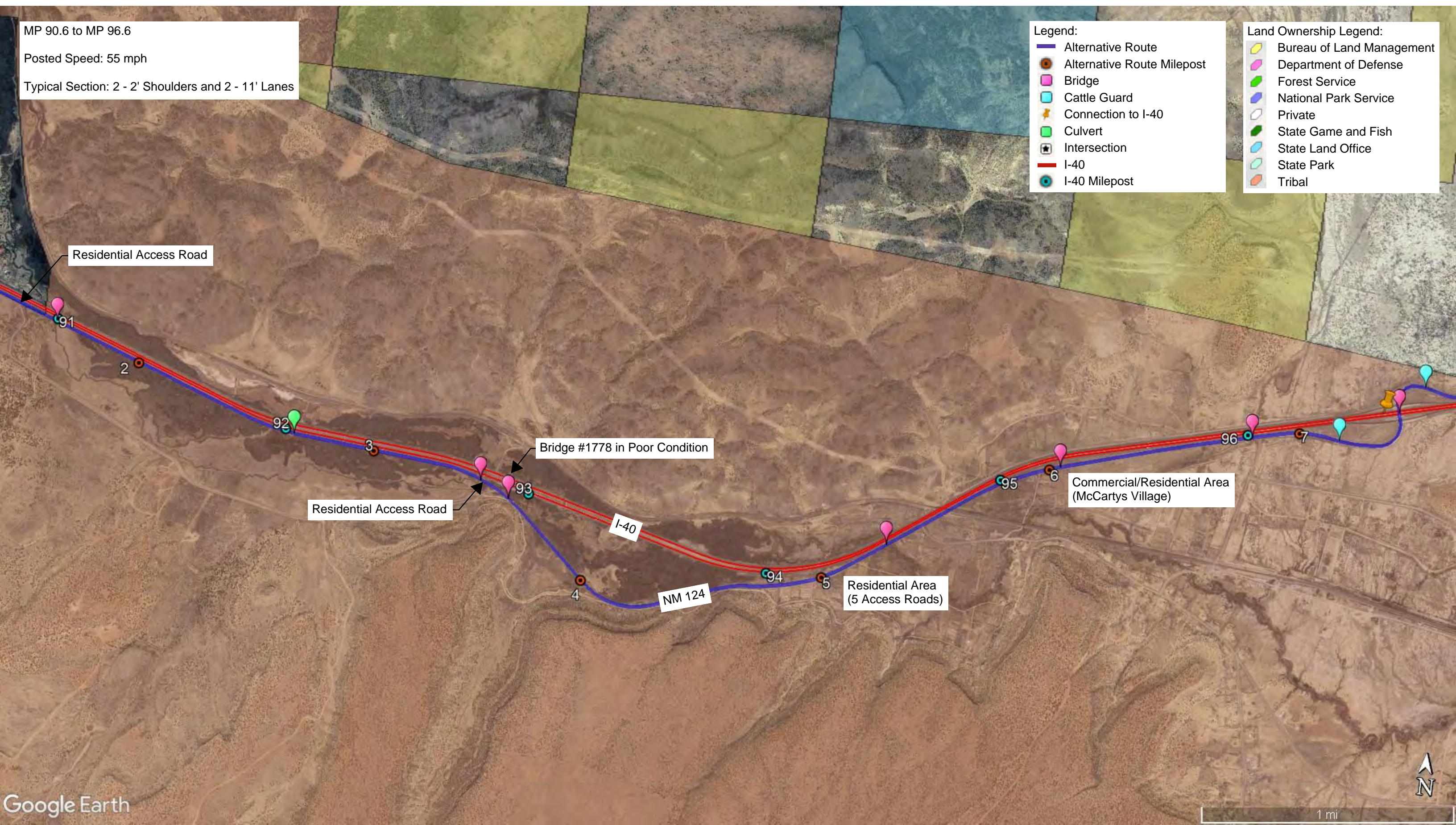
Residential Access Road

Box culvert does not meet height requirements for commercial vehicles.

MP 90.6 to MP 96.6  
Posted Speed: 55 mph  
Typical Section: 2 - 2' Shoulders and 2 - 11' Lanes

- Legend:
- Alternative Route
  - Alternative Route Milepost
  - Bridge
  - Cattle Guard
  - Connection to I-40
  - Culvert
  - Intersection
  - I-40
  - I-40 Milepost

- Land Ownership Legend:
- Bureau of Land Management
  - Department of Defense
  - Forest Service
  - National Park Service
  - Private
  - State Game and Fish
  - State Land Office
  - State Park
  - Tribal



MP 96.6 to MP 114.4

Posted Speed: 55 mph

Typical Sections: 2 - 2' Shoulders and 2 - 11' Lanes (Ends at MP 112.3)

1 - 10' Separated WB Shared Use Path (Begins at MP 108 and Ends at MP 108.8)

1 - 10' Separated EB Shared Use Path (Begins at MP 109.2 and Ends at MP 112)

2 - 2' Shoulders, 2 - 11' Lanes, 1 - 5' EB Bike Lane Buffer, 1 - 6' Bike Lane (Begins at MP 112.3 and Ends at MP 112.5)

2 - 2' Shoulders, 1 - 11' EB Lane, 2 - 11' WB Lanes, 1 - 5' EB Bike Lane Buffer, 1 - 6' Bike Lane (Begins at MP 112.5 and Ends at MP 113.5)

6' to 22' Median Begins at MP 113

2 - 2' Shoulders, 2 - 11' Lanes, and a 22' to 32' Median (Begins at MP 113.5 and Ends at MP 113.7)

2 - 2' Shoulders, 2 - 11' Lanes, and a 22' to 32' Median (Begins at MP 113.7 to 114.4)

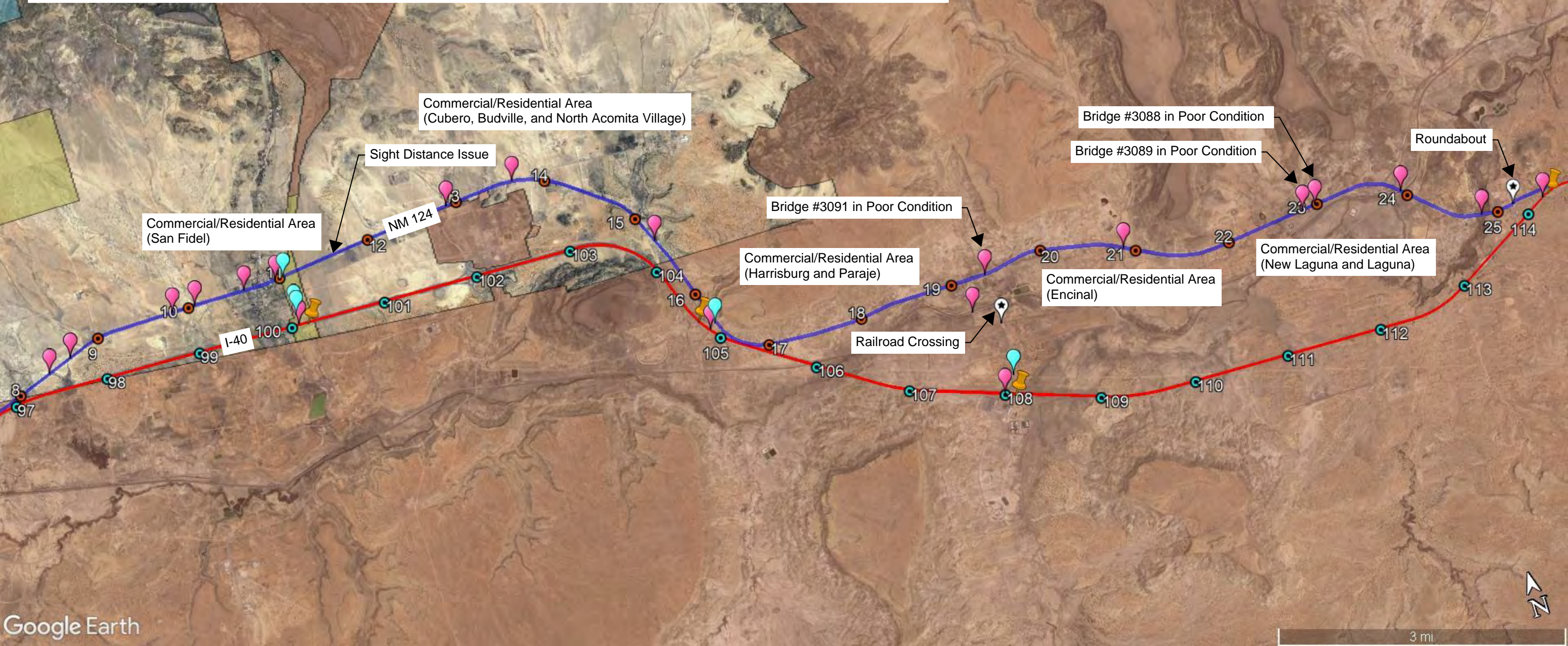
There is no alternative route from MP 114.4 to MP 140.3.

Legend:

- Alternative Route
- Alternative Route Milepost
- Bridge
- Cattle Guard
- Connection to I-40
- Culvert
- Intersection
- I-40
- I-40 Milepost

Land Ownership Legend:

- Bureau of Land Management
- Department of Defense
- Forest Service
- National Park Service
- Private
- State Game and Fish
- State Land Office
- State Park
- Tribal



MP 140.3 to MP 150  
 Posted Speed: 40 mph  
 Typical Sections: 2 - 2' Shoulders and 2 - 12' Lanes (Ends at MP 149.6)  
 4 - 8' Shoulders, 4 - 12' Lanes, and a 22' Median (Begins at MP 149.6)  
 Pavement Recommendation: Reconstruction from MP 140.3 to MP 141

- Legend:**
- Alternative Route
  - Alternative Route Milepost
  - Bridge
  - Cattle Guard
  - ✦ Connection to I-40
  - Culvert
  - ⊠ Intersection
  - I-40
  - I-40 Milepost

- Land Ownership Legend:**
- Bureau of Land Management
  - Department of Defense
  - Forest Service
  - National Park Service
  - Private
  - State Game and Fish
  - State Land Office
  - State Park
  - Tribal

