



PASEO DEL VOLCAN (NM 347) ROAD EXTENSION STUDY



Rainbow Blvd. to Southern Blvd. in Sandoval County

The New Mexico Department of Transportation, in cooperation with the Federal Highway Administration, is performing a study for the extension of Paseo del Volcan (PDV) from Rainbow Blvd. south for 7.5 miles to Southern Blvd. Right-of-way for PDV was identified by a previous study and most parcels have been acquired. The purpose of this study is to determine the configuration and alignment of the proposed roadway. Previous studies have proposed a two-lane roadway, with 12-foot driving lanes and eight-foot shoulders like the existing segment of PDV east of Unser Blvd.

Your input matters!

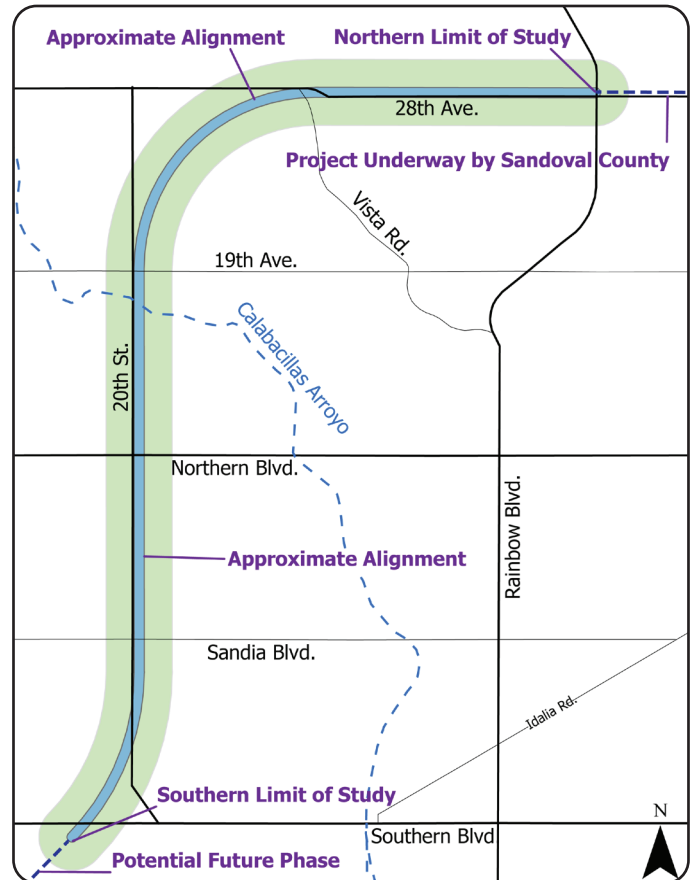
Please share your thoughts on the proposed project and issues of importance and concern to you.

HOW TO PARTICIPATE

As a first step in our public input efforts, we are asking people living within the study area to complete a brief questionnaire by scanning the QR code below or completing the survey online at www.dot.nm.gov/projects/paseo-del-volcan. If you prefer a paper form, copies are available at the Bulk Water Fill Station at 21st Street NW and Northern Boulevard or you can call or send an email to the project team and a copy will be mailed to you.

Please complete and submit this survey by July 14, 2024.

A public meeting is anticipated to be held in July after we complete the questionnaire. A notice will be distributed when a meeting date has been selected. Visit the project website to join the mailing list to receive public engagement notifications.



For any questions regarding this study or the survey please reach out to Tyler Pennington
Phone: (505) 373-7411
Email: PDV@Parametrix.com
Mailing Address: 4041 Jefferson Plaza NE Suite 210, Albuquerque, NM 87109