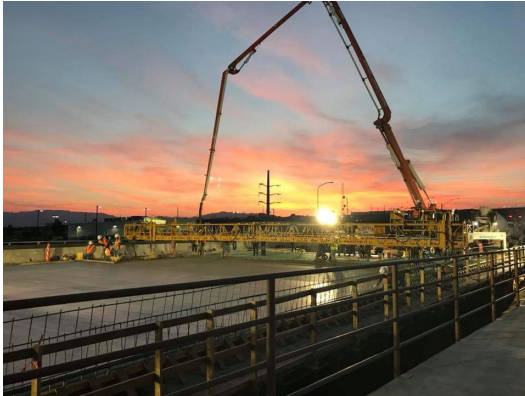


Careers With the NMDOT



The NMDOT has positions in a variety of different disciplines throughout the State of New Mexico. Below is a list of a few sections that have careers for Engineers:

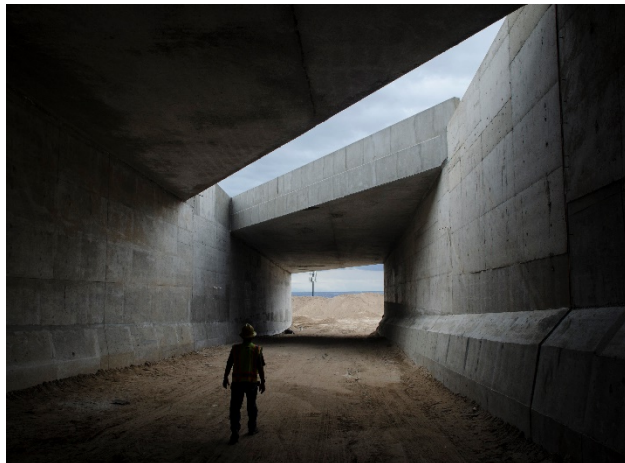
- Construction
- Roadway Design
- Highway Maintenance
- Geotechnical
- Drainage Design
- Traffic Engineering
- Intelligent Transportation Systems
- Environmental
- Bridge Design
- Pavement Design
- Materials Testing
- Survey
- Project Oversight
- Signalization
- Research



*For more information,
contact the EIT Program
Committee at:*

NMDOT.EIT@STATE.NM.US

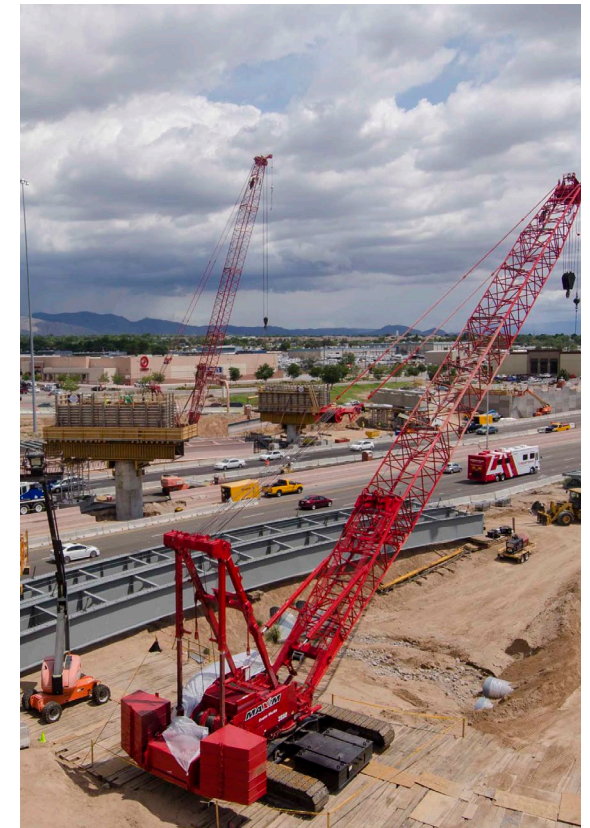
NMDOT General Office
1120 Cerrillos Rd.
Santa Fe, NM 87504



WWW.DOT.NM.GOV



Engineer Licensure Program (ELP)





Program Requirements

In order to be eligible for this program applicants must have all of the following requirements:

- Be a United States citizen or legal resident of the United States as defined by the Immigration Reform Act, 8 USCS, Section 1324b (The NMDOT does not sponsor work visas.),
- At time of hire, must hold a Bachelor's degree in Civil Engineering,
- Possess Certification as an Engineering Intern (EI) or pass the FE within 10 months of entering the ELP, and
- Obtain Licensure as a Professional Engineer in the State of New Mexico within 48 months of entering the program.

Program Details

The Engineer Licensure Program (ELP) was created to give new engineers a glimpse into the day-to-day operations of different engineering disciplines, allowing them to discover or reaffirm their passions within the NMDOT. Candidates accepted into the program will be hired as an Engineer Graduate (Pay Band "ED").

The program consists of two phases. The first phase is a training rotation during which employees gain experience in the various operations conducted by the NMDOT. Examples of operations are: Drainage Design, Bridge Design, Geotechnical, Survey, Regional Design, Construction Bureau, Maintenance, Traffic Design, District Operations, District Construction, Intelligent Transportation Systems, and Pavement Design.

During the second phase, employees are assigned to a permanent duty station where they will work as an Engineer Intern (Pay Band "EE") until obtaining their Professional Engineering License.



Benefits to being an NMDOT employee

Retirement:

NMDOT currently has a pension retirement plan through Public Employees Retirement Association of New Mexico (PERA).

Insurance:

NMDOT has health, vision, dental, and basic & dependent life insurance.

Leave:

Bi-weekly accumulation of annual & sick leave, 1 personal day a year (after 1-yr probation period), 10 paid holidays a year, military & FMLA leave, and provision for leave donation.

Compensation:

The NMDOT offers competitive pay with opportunities for promotion once Engineers have attained licensure.